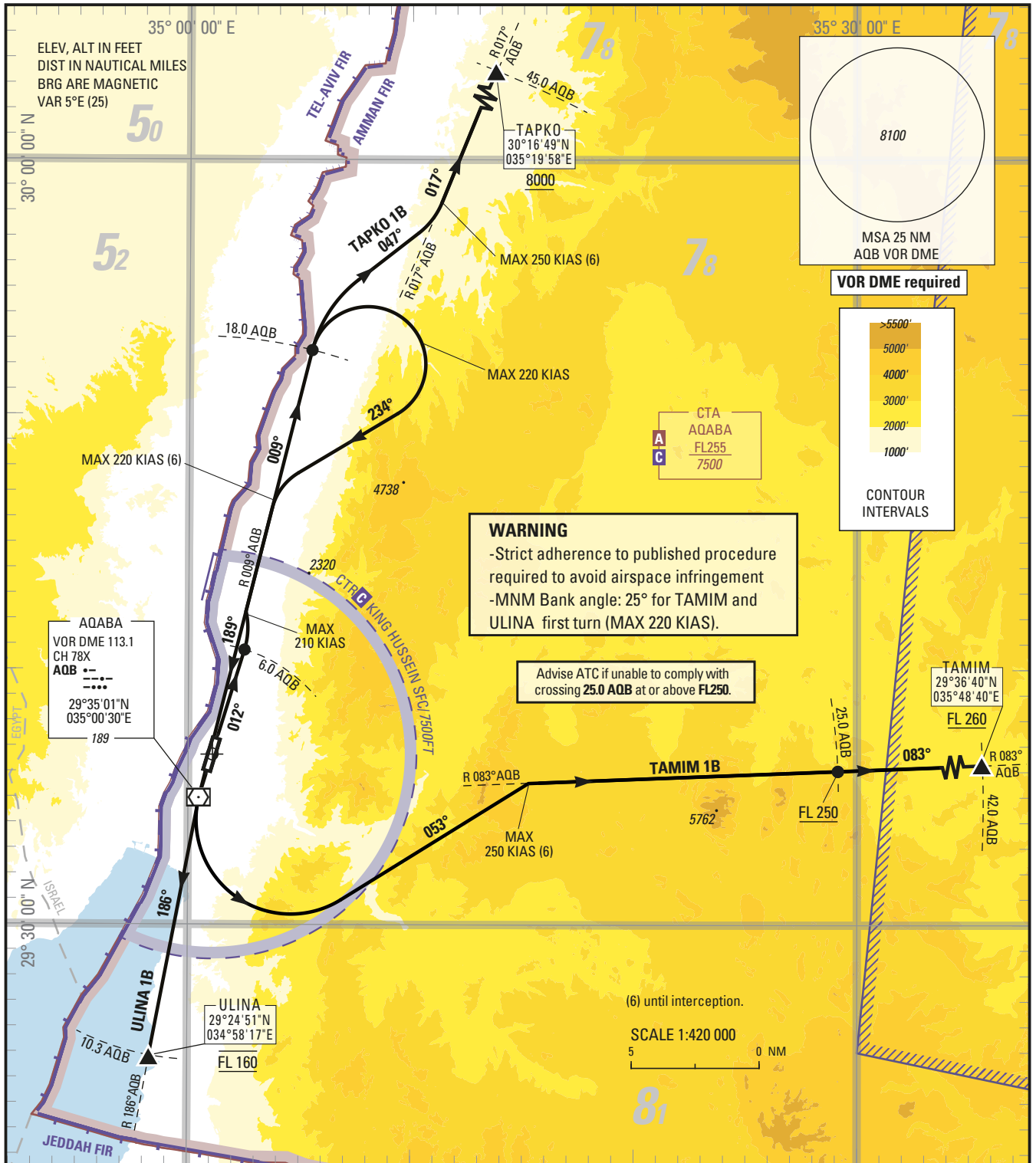


**STANDARD DEPARTURE CHART —  
INSTRUMENT (SID) — ICAO**

TRANSITION LEVEL	FL 150
TRANSITION ALTITUDE	13000 ft

Aqaba Sector	132.425
King Hussein Tower	119.2

**AQABA/King Hussein Intl. (OJAQ)**  
**RWY 01**  
TAMIM 1B TAPKO 1B  
ULINA 1B



**TAMIM 1B:**  
Climb (1) on course 012°M. At 6.0 AQB, turn left (2) to intercept and follow R 009° AQB (009°M). At 18.0 AQB, turn right (3) heading 234°M to intercept and follow R 009° AQB (189°M) to AQB. At AQB, turn left (4) heading 053°M to intercept and follow R 083° AQB (083°M), crossing 25.0 AQB at or above FL250 (5), then to TAMIM at or above FL260.  
(1) PDG: 5.3% up to 4900. (2) Max 210 KIAS. (3) Max 220 KIAS. (4) Max 250 KIAS. (5) ATS climb gradient: 5.8% up to FL250. Advise ATC if unable to ensure the ATS climb gradient.

**TAPKO 1B:**  
Climb (1) on course 012°M. At 6.0 AQB, turn left (2) to intercept and follow R 009° AQB (009°M). At 18.0 AQB, turn right (3) heading 047°M to intercept and follow R 017° AQB (017°M) to TAPKO at or above 8000. (1) PDG: 5.3% up to 3500. (2) Max 210 KIAS. (3) Max 250 KIAS.

**ULINA 1B:**  
Climb (1) on course 012°M. At 6.0 AQB, turn left (2) to intercept and follow R 009° AQB (009°M). At 18.0 AQB, turn right (3) heading 234°M to intercept and follow R 009° AQB (189°M) to AQB then follow R 186° AQB (186°M) to ULINA at FL160.  
(1) PDG: 5.3% up to 4900. (2) Max 210 KIAS. (3) Max 220 KIAS.

