

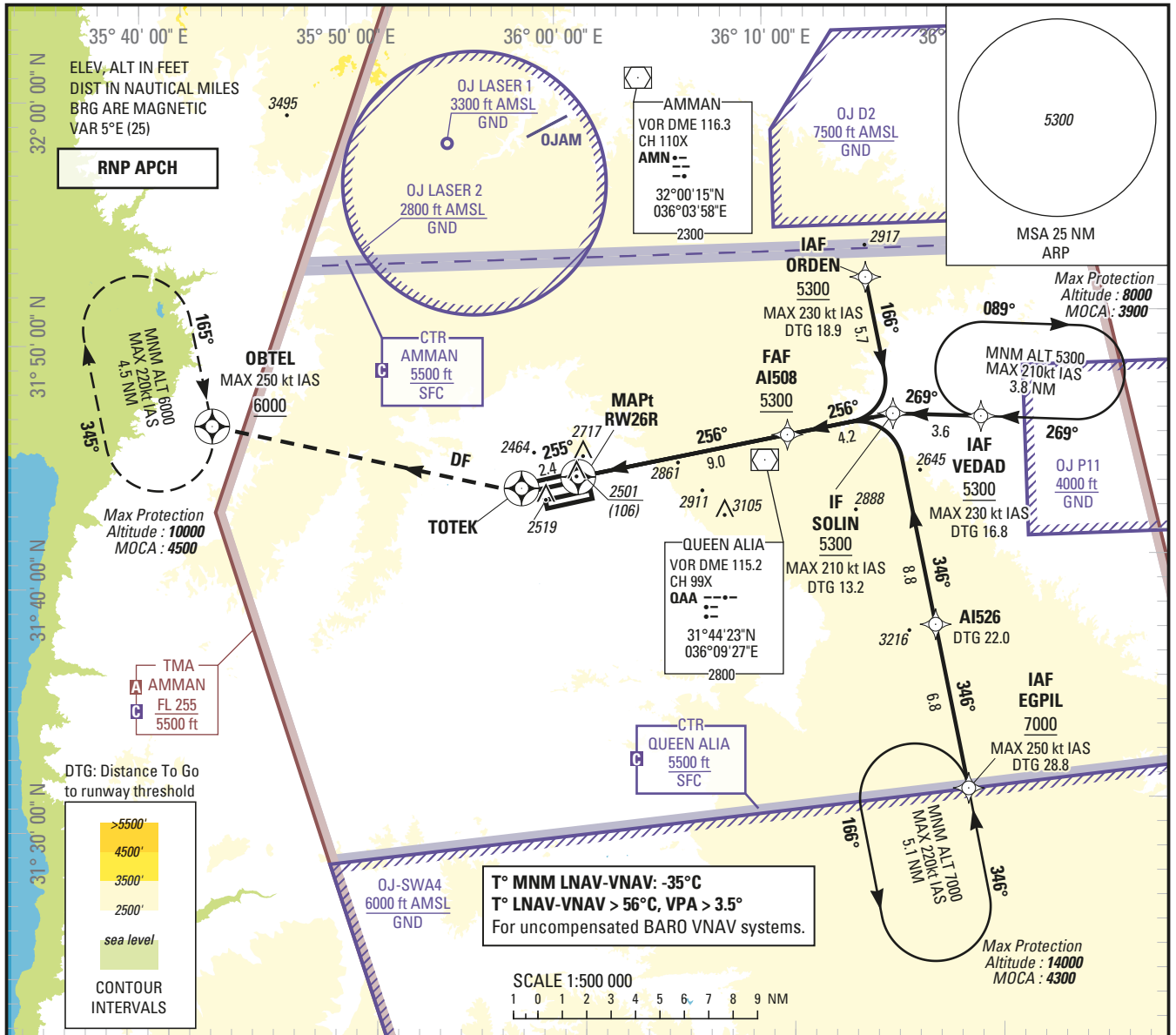
**INSTRUMENT  
APPROACH  
CHART — ICAO**

**AERODROME ELEV 2396 ft**  
HEIGHTS RELATED TO  
THR RWY 26R — ELEV 2395 ft

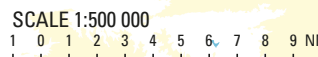
ATIS 127.6  
APP 128.9  
TWR 119.8

**AMMAN/Queen Alia International (OJAI)**

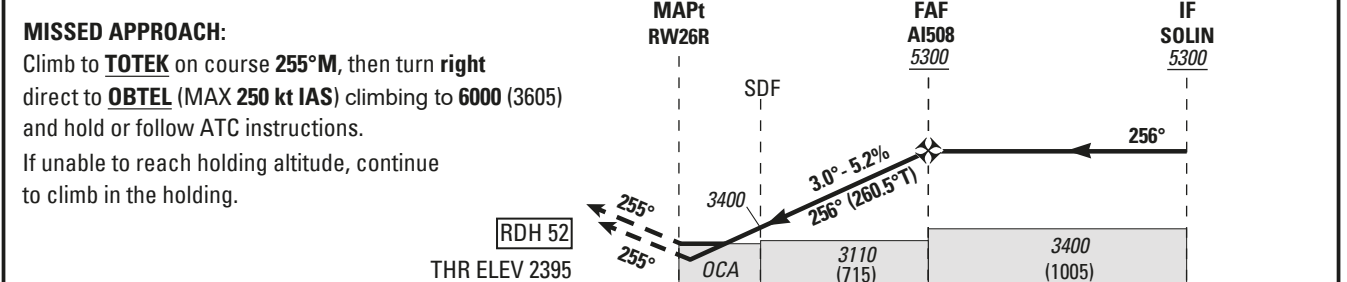
**RNP RWY 26R**



**T° MNM LNAV-VNAV: -35°C**  
**T° LNAV-VNAV > 56°C, VPA > 3.5°**  
For uncompensated BARO VNAV systems.



NM to THR	RWY26R	1	2	3	4	5	6	7	8	TRANSITION ALTITUDE 13000 TRANSITION LEVEL FL 150
ALTITUDE		2770	3080	3400	3720	4040	4360	4680	4990	



NM to THR RWY 26R	0	3.0	9.0	13.2
-------------------	---	-----	-----	------

<b>OCA (H)</b>	A	B	C	D												
LNAV / VNAV	<b>2630</b> (235)	<b>2650</b> (255)	<b>2660</b> (265)	<b>2670</b> (275)	<b>GS</b>	kt	70	85	100	115	130	145	160	185		
LNAV	<b>2750</b> (355)				FAF-MAPT 9.0 NM	min:s	<b>7:41</b>	<b>6:19</b>	<b>5:23</b>	<b>4:40</b>	<b>4:08</b>	<b>3:42</b>	<b>3:22</b>	<b>2:54</b>		
CIRCLING	<b>3020</b> (625)	<b>3310</b> (915)	<b>3500</b> (1105)		Rate of descent 5.2%	ft/min	<b>370</b>	<b>450</b>	<b>530</b>	<b>610</b>	<b>690</b>	<b>770</b>	<b>850</b>	<b>980</b>		

CHANGE: MISSED APPROACH TEXT



**Holding instruction**

Path Descriptor	Waypoint Identifier	Inbound Course °M (°T)	Leg Distance	Turn direction	Minimum Altitude (ft/FL)	Maximum Altitude (ft/FL)	Speed Limit (kt)	Magnetic Variation	Navigation Specification
Hold	EGPIL	346 (351.0)		L	7000	14000	220	+5.0	RNAV 1
Hold	VEDAD	269 (274.0)		R	5300	8000	210	+5.0	RNAV 1

**Route Description: IAC RNP RWY 26R**

RNP RWY 26R											
Serial Number	Path Descriptor	Waypoint Identifier	Fly - Over	Course °M (°T)	Magnetic Variation	Distance (NM)	Turn direction	Altitude (ft/FL)	MAX IAS (kt)	VPA/TCH (°/ft)	Navigation Accuracy (NM)
10	IF	ORDEN	-	-	-	-	-	+5300	-230	-	RNP APCH
20	TF	SOLIN	-	166 (170.5)	+5.0	5.7	-	+5300	-210	-	RNP APCH
10	IF	EGPIL	-	-	-	-	-	+7000	-250	-	RNP APCH
20	TF	AI526	-	346 (350.6)	+5.0	6.8	-	-	-	-	RNP APCH
30	TF	SOLIN	-	346 (350.6)	+5.0	8.8	-	+5300	-210	-	RNP APCH
10	IF	VEDAD	-	-	-	-	-	+5300	-230	-	RNP APCH
20	TF	SOLIN	-	269 (273.7)	+5.0	3.6	-	+5300	-210	-	RNP APCH
10	IF	SOLIN	-	-	-	-	-	+5300	-210	-	RNP APCH
20	TF	AI508	-	256 (260.5)	+5.0	4.2	-	+5300	-	-	RNP APCH
30	TF	RW26R	Y	256 (260.5)	+5.0	9	-	@2445	-	-3.0/ 52	RNP APCH
40	CF	TOTEK	Y	255 (260.4)	+5.0	2.4	-	-	-	-	RNP APCH
50	DF	OBTEL	Y	-	-	-	-	+6000	-250	-	RNP APCH
60	HM	OBTEL	Y	165 (170.0)	+5.0	4.5	R	-10000 +6000	-220	-	RNP APCH

**Aeronautical Data Tabulation: IAC RNP RWY 26R**

WAYPOINT LIST		
Waypoint / Fix	Latitude	Longitude
ORDEN	31°51'45.200"N	036°14'34.763"E
SOLIN	31°46'06.956"N	036°15'40.791"E
EGPIL	31°30'37.923"N	036°18'41.447"E
AI526	31°37'23.717"N	036°17'22.663"E
VEDAD	31°45'52.847"N	036°19'54.051"E
AI508	31°45'25.387"N	036°10'49.240"E
RW26R	31°43'56.083"N	036°00'27.481"E
TOTEK	31°43'32.348"N	035°57'43.273"E
OBTEL	31°46'28.170"N	035°42'56.686"E