

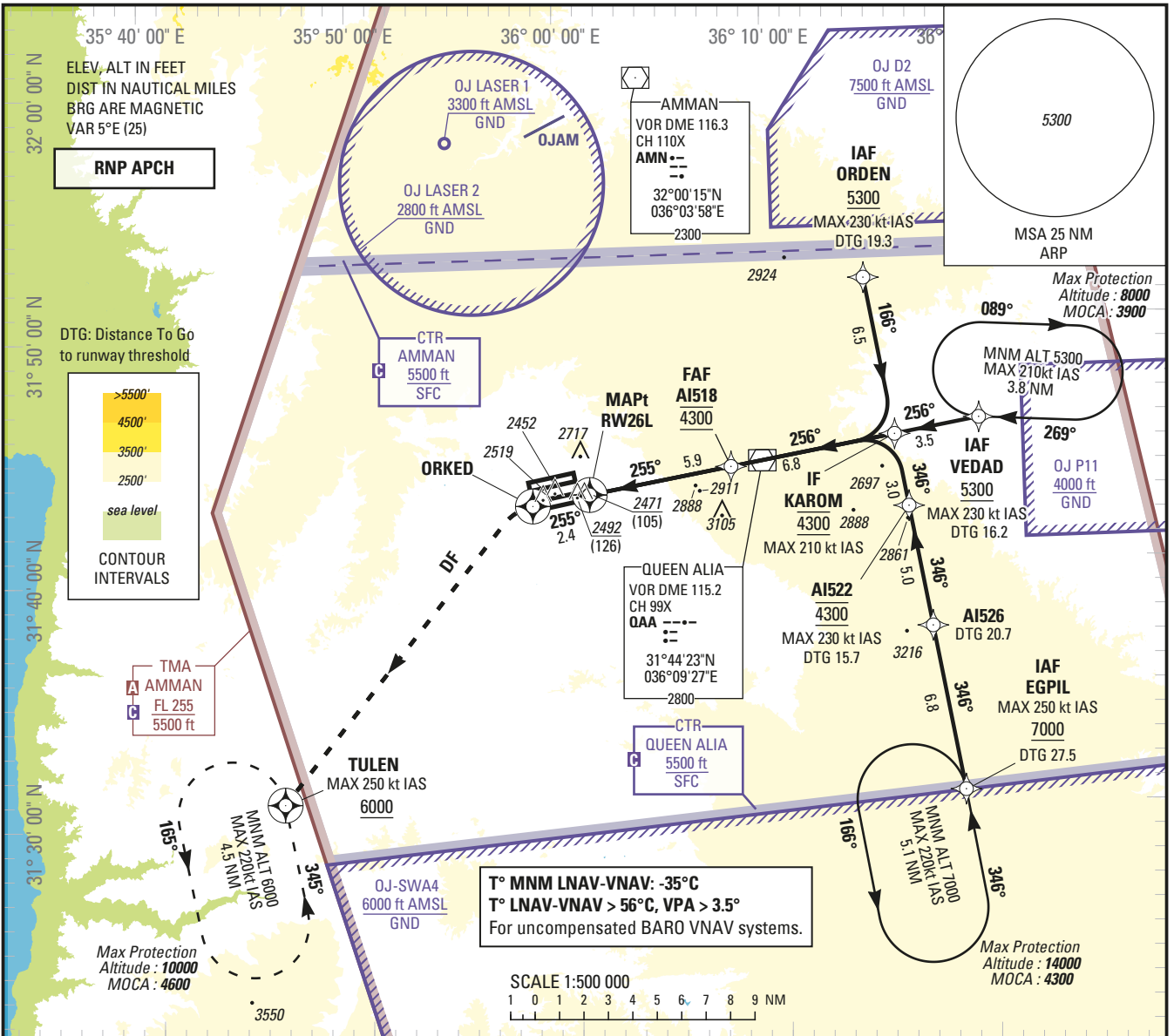
**INSTRUMENT  
APPROACH  
CHART — ICAO**

**AERODROME ELEV 2396 ft**  
HEIGHTS RELATED TO  
THR RWY 26L — ELEV 2366 ft

ATIS 127.6  
APP 128.9  
TWR 119.8

**AMMAN/Queen Alia International (OJAI)**

**RNP RWY 26L**

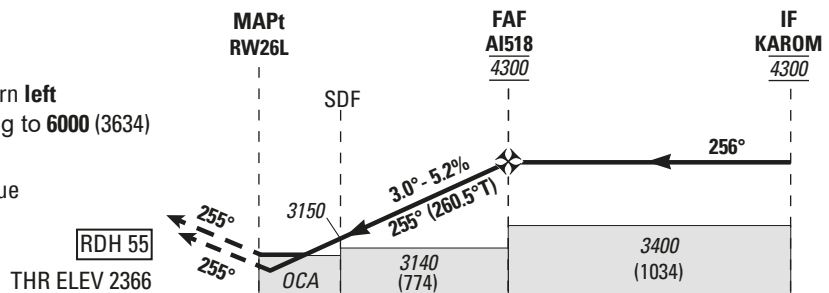


NM to THR	RWY26L	2	3	4	5
ALTITUDE		3060	3380	3690	4010

TRANSITION ALTITUDE 13000  
TRANSITION LEVEL FL 150

**MISSED APPROACH:**

Climb to **ORKED** on course **255°M**, then turn **left** direct to **TULEN** (MAX 250 kt IAS) climbing to **6000** (3634) and hold or follow ATC instructions.  
If unable to reach holding altitude, continue to climb in the holding.



NM to THR RWY 26L						0	2.3	5.9	12.7								
<b>OCA (H)</b>	A	B	C	D													
LNAV / VNAV	2600 (234)	2620 (254)	2630 (264)	2650 (284)	GS	kt	70	85	100	115	130	145	160	185			
LNAV	2720 (354)				FAF-MAPT 5.9 NM	min:s	5:03	4:10	3:32	3:05	2:43	2:27	2:13	1:55			
CIRCLING	3020 (654)		3310 (944)	3500 (1134)	Rate of descent 5.2%	ft/min	370	450	530	610	690	770	850	980			

CHANGE: MISSED APPROACH TEST



**Holding instruction**

Path Descriptor	Waypoint Identifier	Inbound Course °M (°T)	Leg Distance	Turn direction	Minimum Altitude (ft/FL)	Maximum Altitude (ft/FL)	Speed Limit (kt)	Magnetic Variation	Navigation Specification
Hold	EGPIL	346 (351.0)		L	7000	14000	220	+5.0	RNAV 1
Hold	VEDAD	269 (274.0)		R	5300	8000	210	+5.0	RNAV 1

**Route Description: IAC RNP RWY 26L**

RNP RWY 26L											
Serial Number	Path Descriptor	Waypoint Identifier	Fly - Over	Course °M (°T)	Magnetic Variation	Distance (NM)	Turn direction	Altitude (ft/FL)	MAX IAS (kt)	VPA/TCH (°/ft)	Navigation Accuracy (NM)
10	IF	VEDAD	-	-	-	-	-	+5300	-230	-	RNP APCH
20	TF	KAROM	-	256 (260.6)	+5.0	3.5	-	@4300	-210	-	RNP APCH
10	IF	EGPIL	-	-	-	-	-	+7000	-250	-	RNP APCH
20	TF	AI526	-	346 (350.6)	+5.0	6.8	-	-	-	-	RNP APCH
30	TF	AI522	-	346 (350.6)	+5.0	5.0	-	-	-230	-	RNP APCH
40	TF	KAROM	-	346 (350.5)	+5.0	3.0	-	@4300	-210	-	RNP APCH
10	IF	ORDEN	-	-	-	-	-	+5300	-230	-	RNP APCH
20	TF	KAROM	-	166 (170.5)	+5.0	6.5	-	@4300	-210	-	RNP APCH
10	IF	KAROM	-	-	-	-	-	@4300	-210	-	RNP APCH
20	TF	AI518	-	256 (260.5)	+5.0	6.8	-	@4300	-	-	RNP APCH
30	TF	RW26L	Y	255 (260.5)	+5.0	5.9	-	@2421	-	-3.0/ 55	RNP APCH
40	CF	ORKED	Y	255 (260.4)	+5.0	2.4	-	-	-	-	RNP APCH
50	DF	TULEN	Y	-	-	-	-	+6000	-250	-	RNP APCH
60	HM	TULEN	Y	345 (350.0)	+5.0	4.5	L	-10000 +6000	-220	-	RNP 1

**Aeronautical Data Tabulation: IAC RNP RWY 26L**

WAYPOINT LIST		
Waypoint / Fix	Latitude	Longitude
VEDAD	31°45'52.847"N	036°19'54.051"E
KAROM	31°45'18.212"N	036°15'50.229"E
EGPIL	31°30'37.923"N	036°18'41.447"E
AI526	31°37'23.717"N	036°17'22.663"E
AI522	31°42'20.285"N	036°16'24.963"E
ORDEN	31°51'45.200"N	036°14'34.763"E
AI518	31°44'10.497"N	036°07'56.283"E
RW26L	31°43'11.593"N	036°01'06.914"E
ORKED	31°42'47.802"N	035°58'22.337"E
TULEN	31°30'50.349"N	035°46'04.661"E