

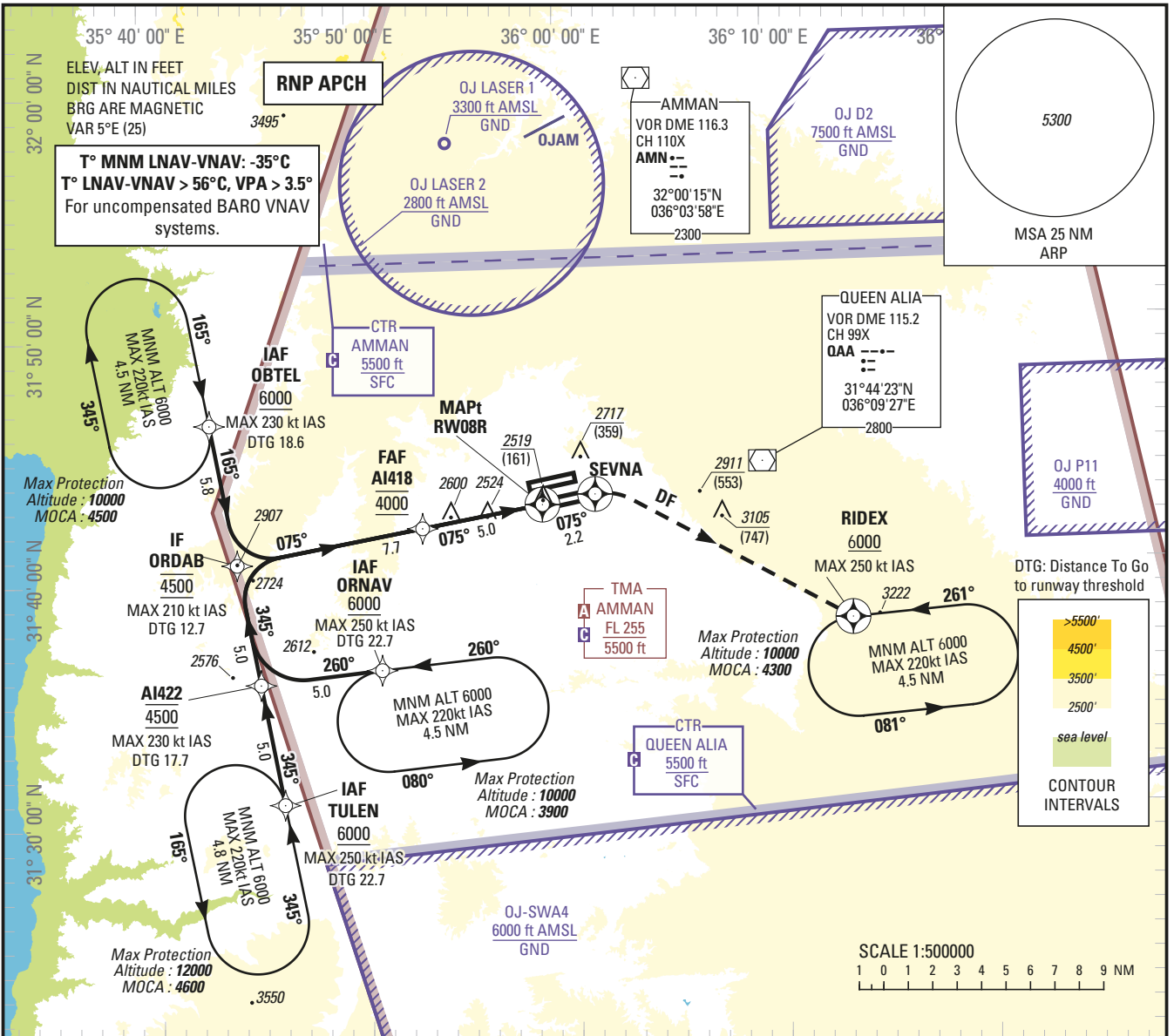
**INSTRUMENT APPROACH CHART — ICAO**

**AERODROME ELEV 2396 ft**  
HEIGHTS RELATED TO  
THR RWY 08R — ELEV 2358 ft

ATIS 127.6  
APP 128.9  
TWR 119.8

**AMMAN/Queen Alia International (OJAI)**

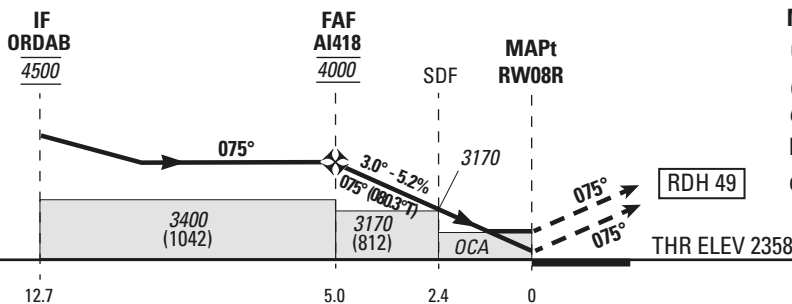
**RNP RWY 08R**



CHANGE: MISSED APPROACH TEST

5	4	3	2	RW08 R	NM FAF to THR
4000	3680	3360	3040		ALTITUDE

TRANSITION ALTITUDE 13000  
TRANSITION LEVEL FL 150



**MISSED APPROACH:**

Climb to **SEVNA** on course **075°M**, then turn **right** direct to **RIDEK** (MAX 250 kt IAS) climbing to **6000** (3642) and hold or follow ATC instructions. If unable to reach holding altitude, continue to climb in the holding.

<b>OCA (H)</b>	A	B	C	D												
LNAV / VNAV	2640 (282)	2650 (292)	2670 (312)	2680 (322)	GS	kt	70	85	100	115	130	145	160	185		
LNAV	2770 (412)				FAF-MAPT 5.0 NM	min:s	4:17	3:32	3:00	2:37	2:19	2:04	1:53	1:37		
CIRCLING	3020 (662)		3310 (952)		3500 (1142)		Rate of descent 5.2%	ft/min	370	450	530	610	690	770	850	980



**Holding instruction**

Path Descriptor	Waypoint Identifier	Inbound Course °M (°T)	Leg Distance	Turn direction	Minimum Altitude (ft/FL)	Maximum Altitude (ft/FL)	Speed Limit (kt)	Magnetic Variation	Navigation Specification
Hold	ORNAV	260 (265.0)		L	6000	10000	220	+5.0	RNAV 1
Hold	OBTEL	165 (170.0)		R	6000	10000	220	+5.0	RNAV 1
Hold	TULEN	345 (350.0)		L	6000	12000	220	+5.0	RNAV 1

**Route Description: IAC RNP RWY 08R**

RNP RWY 08R											
Serial Number	Path Descriptor	Waypoint Identifier	Fly - Over	Course °M (°T)	Magnetic Variation	Distance (NM)	Turn direction	Altitude (ft/FL)	MAX IAS (kt)	VPA/TCH (°ft)	Navigation Accuracy (NM)
10	IF	TULEN	-	-	-	-	-	+6000	-250	-	RNP APCH
20	TF	AI422	-	345 (350.3)	+5.0	5.0	-	@4500	-230	-	RNP APCH
30	TF	ORDAB	-	345 (350.3)	+5.0	5.0	-	@4500	-210	-	RNP APCH
10	IF	ORNAV	-	-	-	-	-	+6000	-250	-	RNP APCH
20	TF	AI422	-	260 (264.5)	+5.0	5.0	-	@4500	-230	-	RNP APCH
30	TF	ORDAB	-	345 (350.3)	+5.0	5.0	-	@4500	-210	-	RNP APCH
10	IF	OBTEL	-	-	-	-	-	+6000	-230	-	RNP APCH
20	TF	ORDAB	-	165 (170.3)	+5.0	5.8	-	@4500	-210	-	RNP APCH
10	IF	ORDAB	-	-	-	-	-	@4500	-210	-	RNP APCH
20	TF	AI418	-	075 (080.3)	+5.0	7.7	-	@4000	-	-	RNP APCH
30	TF	RW08R	Y	075 (080.3)	+5.0	5.0	-	@2407	-	-3.0/ 49	RNP APCH
40	CF	SEVNA	Y	075 (080.4)	+5.0	2.2	-	-	-	-	RNP APCH
50	DF	RIDEX	Y	-	-	-	-	+6000	-250	-	RNP APCH
60	HM	RIDEX	Y	261 (266.0)	+5.0	4.5	L	-10000 +6000	-220	-	RNP 1

**Aeronautical Data Tabulation: IAC RNP RWY 08R**

WAYPOINT LIST		
Waypoint / Fix	Latitude	Longitude
TULEN	31°30'50.349"N	035°46'04.661"E
AI422	31°35'46.683"N	035°45'05.370"E
ORDAB	31°40'43.005"N	035°44'05.974"E
ORNAV	31°36'15.421"N	035°50'55.033"E
OBTEL	31°46'28.170"N	035°42'56.686"E
AI418	31°42'01.467"N	035°53'03.026"E
RW08R	31°42'51.784"N	035°58'49.852"E
SEVNA	31°43'13.834"N	036°01'22.441"E
RIDEX	31°37'52.231"N	036°13'33.985"E