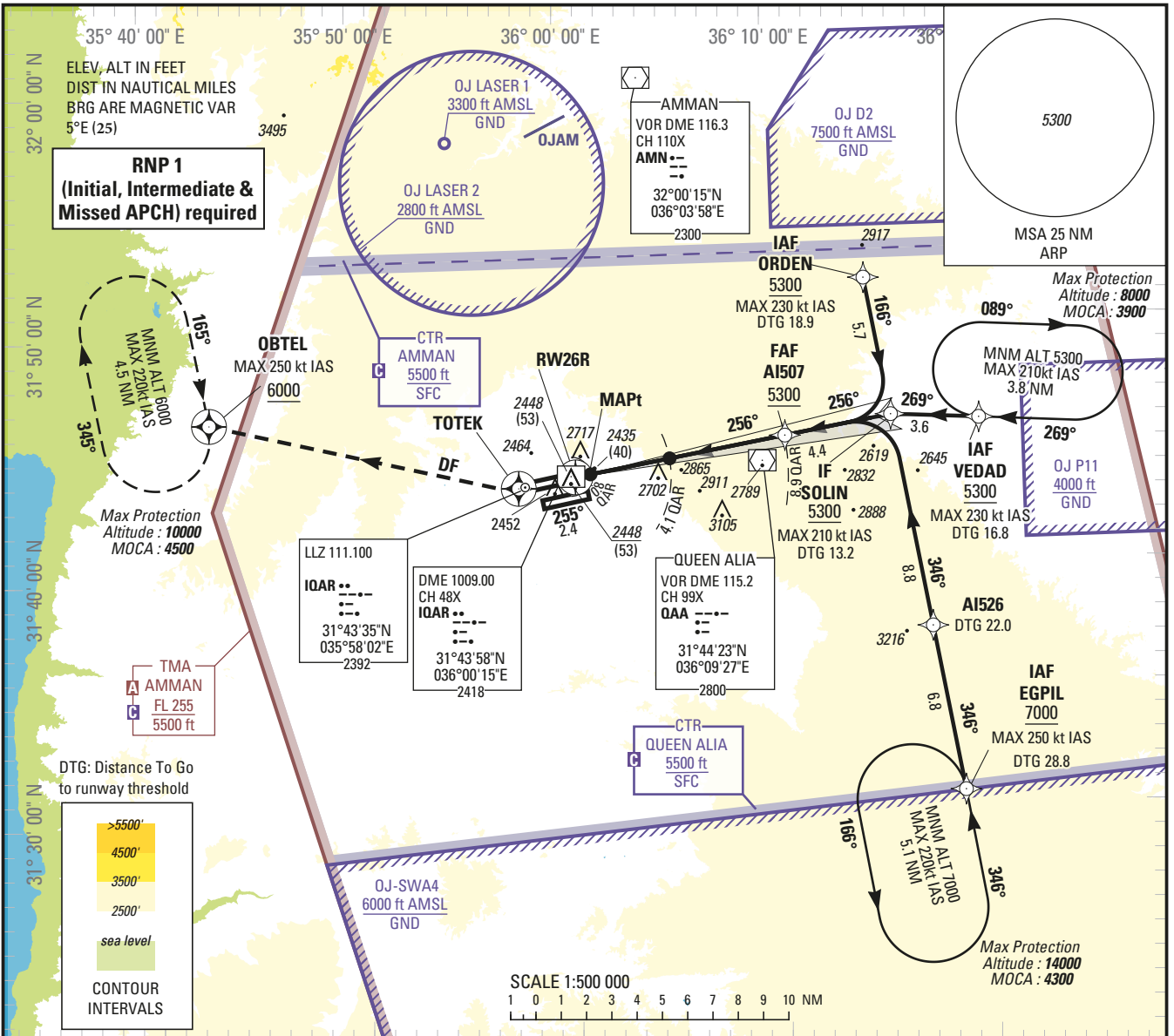


**INSTRUMENT APPROACH CHART — ICAO**

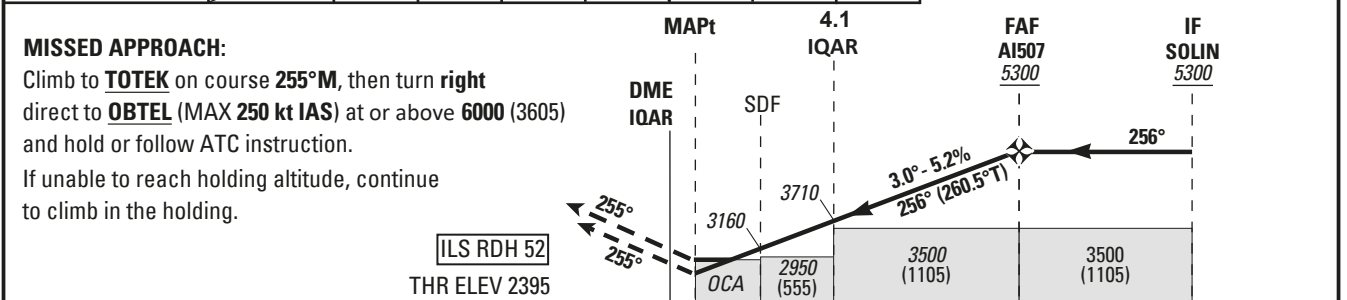
**AERODROME ELEV 2396 ft**  
HEIGHTS RELATED TO  
THR RWY 26R — ELEV 2395 ft

ATIS 127.6  
APP 128.9  
TWR 119.8

**AMMAN/Queen Alia International (OJAI)**  
ILS Z RWY 26R



NM to DME	IQAR	2	3	4	5	6	7	8	TRANSITION ALTITUDE 13000 TRANSITION LEVEL FL 150
ALTITUDE		3030	3360	3680	4010	4330	4660	5000	



IQAR DME (NM)		0	0.8	2.4	4.1	8.9	13.3
NM to THR RWY 26R		0.6	2.2	3.9	8.7	13.2	
<b>OCA (H)</b>	A	B	C	D	DL		
Straight-in Approach	Cat I	2550 (155)	2560 (165)	2570 (175)	2580 (185)	2590 (195)	
	Cat II	2450 (55)	2460 (65)	2480 (85)	2490 (95)	2500 (105)	
	GP INOP	2690 (295)					-
Circling	3020 (625)	3310 (915)	3500 (1105)	-			
GS	kt	70	85	100	115	130	145
	min:s	6:57	5:43	4:52	4:14	3:44	3:21
Rate of descent	ft/min	370	450	530	610	690	770

CHANGE: REMOVE OM FROM PROCEDURE



**Holding instruction**

<i>Path Descriptor</i>	<i>Waypoint Identifier</i>	<i>Inbound Course °M (°T)</i>	<i>Leg Distance</i>	<i>Turn direction</i>	<i>Minimum Altitude (ft/FL)</i>	<i>Maximum Altitude (ft/FL)</i>	<i>Speed Limit (kt)</i>	<i>Magnetic Variation</i>	<i>Navigation Specification</i>
Hold	EGPIL	346 (351.0)		L	7000	14000	220	+5.0	RNAV 1
Hold	VEDAD	269 (274.0)		R	5300	8000	210	+5.0	RNAV 1

**Route Description: IAC RNP ILS Z RWY 26R**

<b>RNP ILS Z RWY 26R</b>											
<i>Serial Number</i>	<i>Path Descriptor</i>	<i>Waypoint Identifier</i>	<i>Fly - Over</i>	<i>Course °M (°T)</i>	<i>Magnetic Variation</i>	<i>Distance (NM)</i>	<i>Turn direction</i>	<i>Altitude (ft/FL)</i>	<i>MAX IAS (kt)</i>	<i>VPA/TCH (°ft)</i>	<i>Navigation Accuracy (NM)</i>
10	IF	ORDEN	-	-	-	-	-	+5300	-230	-	RNP APCH
20	TF	SOLIN	-	166 (170.5)	+5.0	5.7	-	+5300	-210	-	RNP APCH
10	IF	EGPIL	-	-	-	-	-	+7000	-250	-	RNP APCH
20	TF	AI526	-	346 (350.6)	+5.0	6.8	-	-	-	-	RNP APCH
30	TF	SOLIN	-	346 (350.6)	+5.0	8.8	-	+5300	-210	-	RNP APCH
10	IF	VEDAD	-	-	-	-	-	+5300	-230	-	RNP APCH
20	TF	SOLIN	-	269 (273.7)	+5.0	3.6	-	+5300	-210	-	RNP APCH
10	IF	SOLIN	-	-	-	-	-	+5300	-210	-	RNP APCH
20	TF	AI507	-	256 (260.5)	+5.0	4.4	-	+5300	-	-	RNP APCH
30	TF	RW26R	Y	256 (260.5)	+5.0	8.7	-	@2445	-	-3.0/ 52	RNP APCH
40	CF	TOTEK	Y	255 (260.4)	+5.0	2.4	-	-	-	-	RNP APCH
50	DF	OBTEL	Y	-	-	-	-	+6000	-250	-	RNP APCH
60	HM	OBTEL	Y	165 (170.0)	+5.0	4.5	R	-10000 +6000	-220	-	RNP APCH

**Aeronautical Data Tabulation: IAC RNP ILS Z RWY 26R**

WAYPOINT LIST		
Waypoint / Fix	Latitude	Longitude
ORDEN	31°51'45.200"N	036°14'34.763"E
SOLIN	31°46'06.956"N	036°15'40.791"E
EGPIL	31°30'37.923"N	036°18'41.447"E
AI526	31°37'23.717"N	036°17'22.663"E
VEDAD	31°45'52.847"N	036°19'54.051"E
AI507	31°45'23.210"N	036°10'34.368"E
RW26R	31°43'56.083"N	036°00'27.481"E
TOTEK	31°43'32.348"N	035°57'43.273"E
OBTEL	31°46'28.170"N	035°42'56.686"E