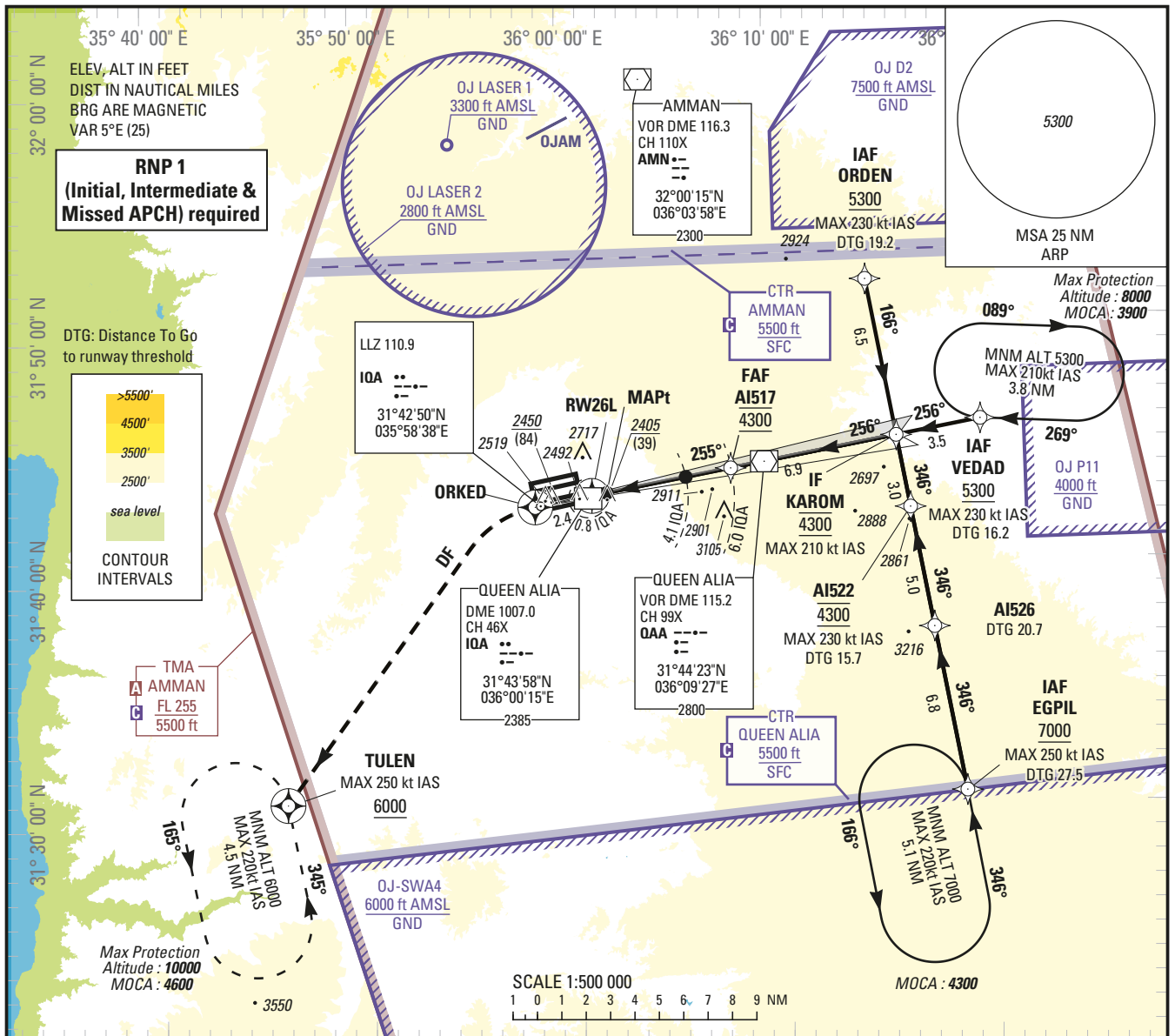


**INSTRUMENT
APPROACH
CHART — ICAO**

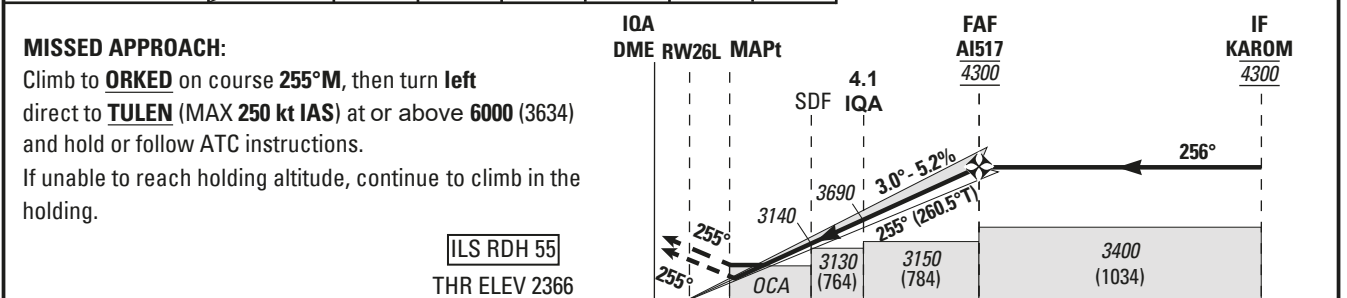
AERODROME ELEV 2396 ft
HEIGHTS RELATED TO
THR RWY 26L — ELEV 2366 ft

ATIS 127.6
APP 128.9
TWR 119.8

AMMAN/Queen Alia Int. (OJAI)
ILS Z RWY 26L



NM to DME	IAA	1	2	3	4	5	6	TRANSITION ALTITUDE 13000 TRANSITION LEVEL FL 150
ALTITUDE		2690	3010	3330	3650	3980	4300	



NM to THR RWY 26L	0.0	0.0	0.6	2.2	3.9	5.8	12.7
NM to IAA	0.0	0.0	0.8	2.4	4.1	6.0	12.9

(1) OCA (H)		A	B	C	D	DL	(1) For additional minima, see OJAI AD 2.24.8-23										
Straight-in Approach	Cat I 2.5%	2550 (184)	2570 (204)	2570 (204)	2580 (214)		GS	kt	70	85	100	115	130	145	160	185	
	Cat II 2.5%	2470 (104)	2480 (114)	2490 (124)	2510 (144)			FAF-MAPt 5.2 NM	min:s	4:27	3:40	3:07	2:42	2:24	2:09	1:57	1:41
	GP INOP 2.5%	2660 (294)							Rate of descent	ft/min	370	450	530	610	690	770	850
Circling		3020 (654)	3310 (944)	3500 (1134)													

CHANGE: REMOVE OM FROM PROCEDURE

Holding instruction

Path Descriptor	Waypoint Identifier	Inbound Course °M (°T)	Leg Distance	Turn direction	Minimum Altitude (ft/FL)	Maximum Altitude (ft/FL)	Speed Limit (kt)	Magnetic Variation	Navigation Specification
Hold	EGPIL	346 (351.0)		L	7000	14000	220	+5.0	RNAV 1
Hold	VEDAD	269 (274.0)		R	5300	8000	210	+5.0	RNAV 1

Route Description: IAC RNP ILS Z RWY 26L

RNP ILS Z RWY 26L											
Serial Number	Path Descriptor	Waypoint Identifier	Fly - Over	Course °M (°T)	Magnetic Variation	Distance (NM)	Turn direction	Altitude (ft/FL)	MAX IAS (kt)	VPA/TCH (°ft)	Navigation Accuracy (NM)
10	IF	VEDAD	-	-	-	-	-	+5300	-230	-	RNP APCH
20	TF	KAROM	-	256 (260.6)	+5.0	3.5	-	@4300	-210	-	RNP APCH
10	IF	EGPIL	-	-	-	-	-	+7000	-250	-	RNP APCH
20	TF	AI526	-	346 (350.6)	+5.0	6.8	-	-	-	-	RNP APCH
30	TF	AI522	-	346 (350.6)	+5.0	5.0	-	@4300	-230	-	RNP APCH
40	TF	KAROM	-	346 (350.5)	+5.0	3.0	-	@4300	-210	-	RNP APCH
10	IF	ORDEN	-	-	-	-	-	+5300	-230	-	RNP APCH
20	TF	KAROM	-	166 (170.5)	+5.0	6.5	-	@4300	-210	-	RNP APCH
10	IF	KAROM	-	-	-	-	-	@4300	-210	-	RNP APCH
20	TF	AI517	-	256 (260.5)	+5.0	6.9	-	@4300	-	-	RNP APCH
30	TF	RW26L	Y	255 (260.5)	+5.0	5.8	-	@2421	-	-3.0/ 55	RNP APCH
40	CF	ORKED	Y	255 (260.4)	+5.0	2.4	-	-	-	-	RNP APCH
50	DF	TULEN	Y	-	-	-	-	+6000	-250	-	RNP APCH
60	HM	TULEN	Y	345 (350.0)	+5.0	4.5	L	-10000 +6000	-220	-	RNP 1

Aeronautical Data Tabulation: IAC RNP ILS Z RWY 26L

WAYPOINT LIST		
Waypoint / Fix	Latitude	Longitude
VEDAD	31°45'52.847"N	036°19'54.051"E
KAROM	31°45'18.212"N	036°15'50.229"E
EGPIL	31°30'37.923"N	036°18'41.447"E
AI526	31°37'23.717"N	036°17'22.663"E
AI522	31°42'20.285"N	036°16'24.963"E
ORDEN	31°51'45.200"N	036°14'34.763"E
AI517	31°44'09.557"N	036°07'49.712"E
RW26L	31°43'11.593"N	036°01'06.914"E
ORKED	31°42'47.802"N	035°58'22.337"E
TULEN	31°30'50.349"N	035°46'04.661"E