

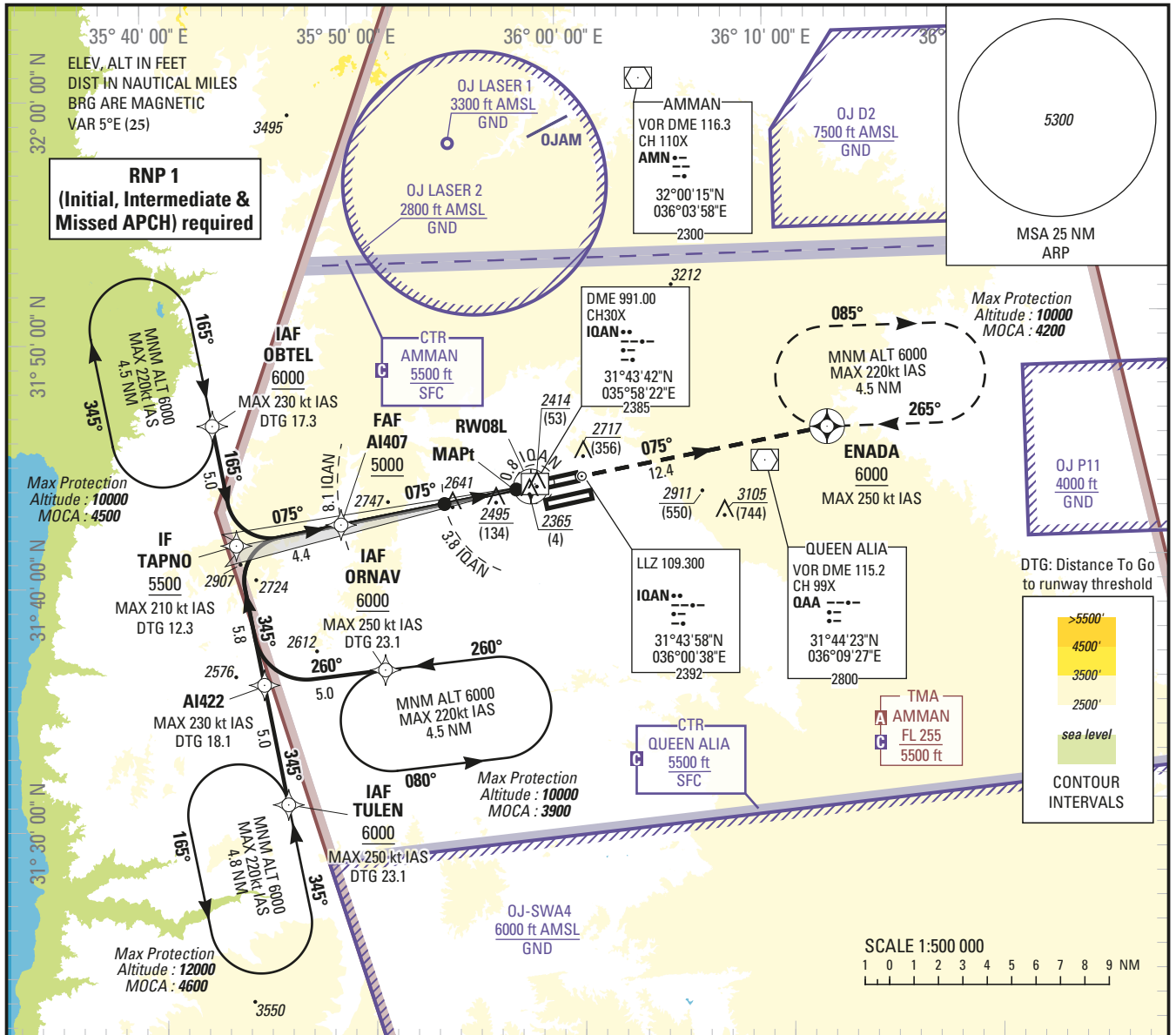
**INSTRUMENT APPROACH CHART — ICAO**

**AERODROME ELEV 2396 ft**  
HEIGHTS RELATED TO  
THR RWY 08L — ELEV 2361 ft

ATIS 127.6  
APP 128.9  
TWR 119.8

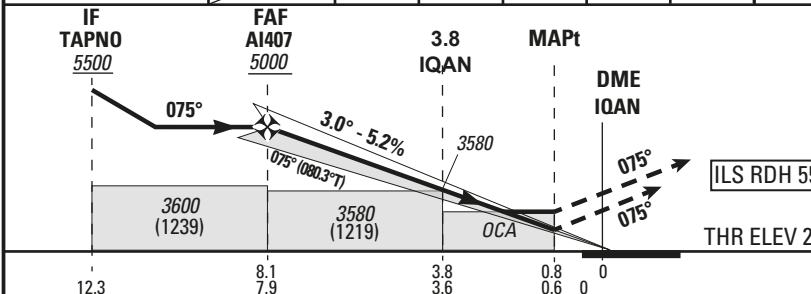
**AMMAN/Queen Alia International (OJAI)**

**ILS Z RWY 08L**



NM to DME	IOAN	8	7	6	5	4	3	2
ALTITUDE		4960	4630	4300	3970	3640	3320	3000

TRANSITION ALTITUDE 13000  
TRANSITION LEVEL FL 150



**MISSED APPROACH:**

Climb to **ENADA** on course **075°M** (MAX 250 kt IAS) at or above **6000** (3639) and hold or follow ATC instructions.

If unable to reach holding altitude, continue to climb in the holding.

	OCA (H)					
	A	B	C	D	DL	
Straight-in Approach	CAT I 2.5%	2600 (239)	2610 (249)	2620 (259)	2630 (269)	2630 (269)
	CAT I 3.0%	2510 (149)	2530 (169)	2540 (179)	2550 (189)	2550 (189)
	CAT II 2.5%	2510 (149)	2530 (169)	2540 (179)	2550 (189)	2550 (189)
	CAT II 3.0%	2420 (59)	2430 (69)	2450 (89)	2470 (109)	2470 (109)
	GP INOP	2750 (389)				
CIRCLING	3020 (659)		3310 (949)		3500 (1139)	

GS	kt	min:s							
		70	85	100	115	130	145	160	185
FAF-MAPT 7.3 NM		6:17	5:10	4:24	3:49	3:23	3:02	2:45	2:23
Rate of descent	ft/min	370	450	530	610	690	770	850	980

CHANGE: REMOVE OM FROM PROCEDURE



**Holding instruction**

Path Descriptor	Waypoint Identifier	Inbound Course °M (°T)	Leg Distance	Turn direction	Minimum Altitude (ft/FL)	Maximum Altitude (ft/FL)	Speed Limit (kt)	Magnetic Variation	Navigation Specification
Hold	ORNAV	260 (265.0)		L	6000	10000	220	+5.0	RNAV 1
Hold	OBTEL	165 (170.0)		R	6000	10000	220	+5.0	RNAV 1
Hold	TULEN	345 (350.0)		L	6000	12000	220	+5.0	RNAV 1

**Route Description: IAC RNP ILS Z RWY 08L**

RNP ILS Z RWY 08L											
Serial Number	Path Descriptor	Waypoint Identifier	Fly - Over	Course °M (°T)	Magnetic Variation	Distance (NM)	Turn direction	Altitude (ft/FL)	MAX IAS (kt)	VPA/TCH (°ft)	Navigation Accuracy (NM)
10	IF	OBTEL	-	-	-	-	-	+6000	-230	-	RNP APCH
20	TF	TAPNO	-	165 (170.3)	+5.0	5.0	-	+5500	-210	-	RNP APCH
10	IF	TULEN	-	-	-	-	-	+6000	-250	-	RNP APCH
20	TF	AI422	-	345 (350.3)	+5.0	5.0	-	-	-230	-	RNP APCH
30	TF	TAPNO	-	345 (350.3)	+5.0	5.8	-	+5500	-210	-	RNP APCH
10	IF	ORNAV	-	-	-	-	-	+6000	-250	-	RNP APCH
20	TF	AI422	-	260 (264.5)	+5.0	5.0	-	-	-230	-	RNP APCH
30	TF	TAPNO	-	345 (350.3)	+5.0	5.8	-	+5500	-210	-	RNP APCH
10	IF	TAPNO	-	-	-	-	-	+5500	-210	-	RNP APCH
20	TF	AI407	-	075 (080.3)	+5.0	4.4	-	+5000	-	-	RNP APCH
30	TF	RW08L	Y	075 (080.3)	+5.0	7.9	-	@2416	-	-3.0/ 55	RNP APCH
40	CF	ENADA	Y	075 (080.5)	+5.0	12.4	-	+6000	-250	-	RNP APCH
50	HM	ENADA	Y	265 (270.0)	+5.0	4.5	R	-10000 +6000	-220	-	RNP 1

**Aeronautical Data Tabulation: IAC RNP ILS Z RWY 08L**

WAYPOINT LIST		
Waypoint / Fix	Latitude	Longitude
OBTEL	31°46'28.170"N	035°42'56.686"E
TAPNO	31°41'31.856"N	035°43'56.172"E
TULEN	31°30'50.349"N	035°46'04.661"E
AI422	31°35'46.683"N	035°45'05.370"E
ORNAV	31°36'15.421"N	035°50'55.033"E
AI407	31°42'16.031"N	035°48'59.611"E
RW08L	31°43'36.228"N	035°58'10.088"E
ENADA	31°45'40.610"N	036°12'29.570"E