

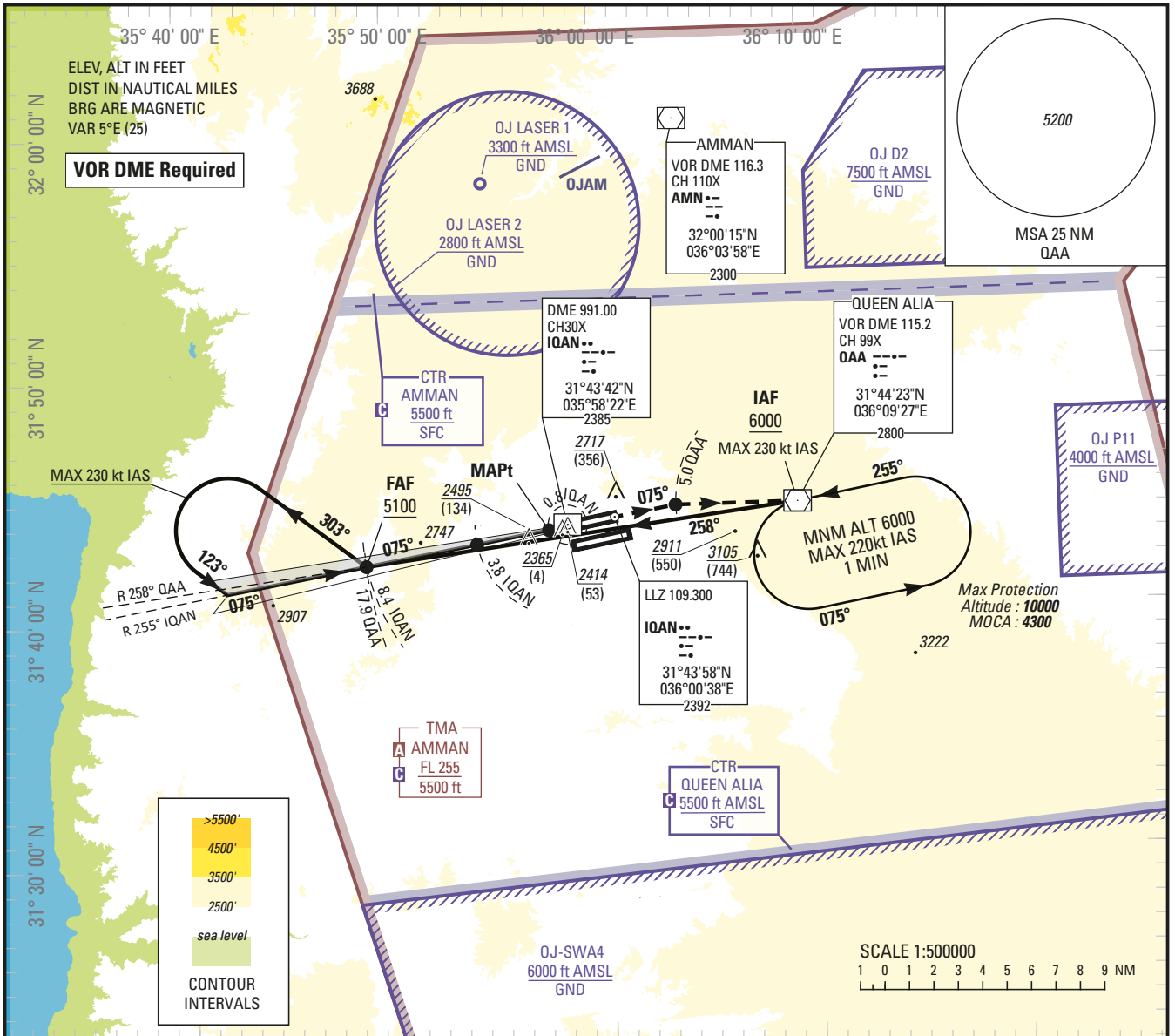
INSTRUMENT APPROACH CHART — ICAO

AERODROME ELEV 2396 ft
HEIGHTS RELATED TO
THR RWY 08L — ELEV 2361 ft

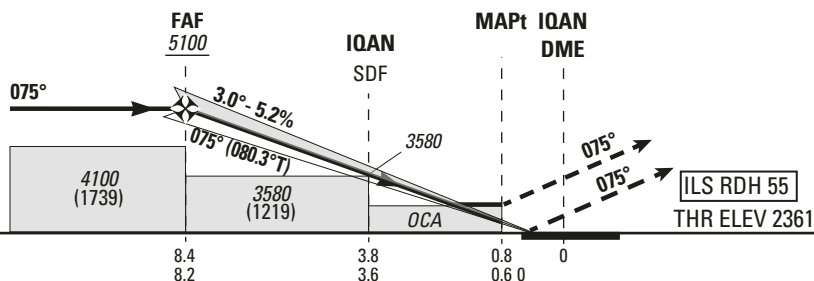
ATIS 127.6
APP 128.9
TWR 119.8

AMMAN/Queen Alia International (OJAI)

ILS Y RWY 08L



8	7	6	5	4	3	2	IQAN	NM to DME	TRANSITION ALTITUDE 13000 TRANSITION LEVEL FL 150
4960	4630	4300	3970	3640	3320	3000		ALTITUDE	



MISSED APPROACH:
Climb on runway heading **075°M**.
At **5NM QAA** turn **right** direct to **QAA**
(Max **230 kt IAS**), climbing to **6000** (3639)
and hold or follow ATC instructions.
If unable to reach holding altitude,
continue climbing in the hold.

OCA (H) (1)	A				B				C				D/DL						
	A		B		C		D		DL		A		B		C		D/DL		
Straight-in Approach	CAT I 2.5%		2900 (539)		2910 (549)		2920 (559)		2930 (569)		2910 (549)		2920 (559)		2930 (569)		2940 (579)		
	CAT I 3.0%		2710 (349)		2720 (359)		2730 (369)		2740 (379)		2710 (349)		2720 (359)		2730 (369)		2740 (379)		
	CAT II 2.5%		2810 (449)		2830 (469)		2840 (479)		2860 (499)		2810 (449)		2830 (469)		2840 (479)		2860 (499)		
GP INOP 2.5%		2890 (529)		2910 (549)		2940 (579)		2960 (599)		-		2890 (529)		2910 (549)		2940 (579)		2960 (599)	
CIRCLING		3020 (659)		3310 (949)		3500 (1139)		-		-		3020 (659)		3310 (949)		3500 (1139)		-	

(1) For additional minima, see OJAI AD 2.24.8-31.

GS	kt	70	85	100	115	130	145	160	185
FAF-MAPT 7.6 NM	min:s	6:32	5:23	4:35	3:59	3:31	3:09	2:52	2:28
Rate of descent	ft/min	370	450	530	610	690	770	850	980

CHANGE: CORRECT QAN TO BE IQAN

INSTRUCTIONS

ILS Y RWY 08L

Minima ILS CAT I

The standard ILS CAT I Minima below are determined for ACFT performing an ILS CAT I procedure which are able to maintain a climbing slope greater than 3.0% during a missed APCH.

<i>Slope in missed approach</i>	<i>OCA (H)</i>			
	A	B	C	D/DL
4.0%	2510 (149)	2530 (169)	2540 (179)	2550 (189)

Minima ILS CAT II

The standard ILS CAT II Minima below are determined for ACFT performing an ILS CAT II procedure which are able to maintain a climbing slope greater than 3.0% during a missed APCH.

<i>Slope in missed approach</i>	<i>OCA (H)</i>			
	A	B	C	D/DL
4.0%	2420 (59)	2430 (69)	2450 (89)	2470 (109)

Minima GP INOP

The standard Minima below are determined for ACFT performing a procedure which are able to maintain a climbing slope greater than 3.0% during a missed APCH.

<i>Slope in missed approach</i>	<i>OCA (H)</i>			
	A	B	C	D
3.0%	2750 (389)			

CHANGE: New IFP procedure

