

**THE HASHEMITE KINGDOM OF JORDAN
CIVIL AVIATION REGULATORY COMMISSION
DIRECTORATE OF AIR TRAFFIC MANAGEMENT
AERONAUTICAL INFORMATION SERVICES
HEADQUARTERS
P. O. BOX : 7547 - AMMAN**

PHONE : +962 6 4872681
FAX: +962 6 4891266
AFS : OJAMYHYX
E-mail: ais.hq@carc.gov.jo
Website: www.carc.jo

**AIP JORDAN
AMENDMENT 76/2015
01 MAY 2015**

1. Insert the attached new or replacement pages dated 01 MAY 2015 in accordance with the new checklist, new or replacement pages are indicated by a star * against the relevant page numbers in the checklist.

→ This bar and arrow are inserted on reprint pages to indicate any changes that have been incorporated

2. Record entry of Amendment on page GEN 0.2-1.

3. NOTAM A0166/15 is hereby cancelled

4. AIC 01/2015 is hereby cancelled

PAGES TO BE DESTROYED

GEN	
*0.4-1	30 APR 2015
*0.4-2	30 APR 2015
*0.4-3	30 APR 2015

GEN 4	
4.1-2	01 AUG 2012
4.1-3	01 MAY 2013
4.1-4	01 NOV 2010
4.1-6	01 MAY 2014
4.1-7	01 MAY 2014
4.1-8	01 MAY 2014
4.1-9	01 MAY 2014
4.1-10	01 MAY 2014
4.1-11	01 MAY 2014
4.1-12	01 MAY 2014
4.2-1	01 NOV 2010
4.2-2	01 NOV 2010

ENR 1	
1.5-12	12 DEC 2013

AD 2 (OJAQ)	
2.24.8-5	12 DEC 2013
2.24.8-6	12 DEC 2013

PAGES TO BE INSERTED

GEN	
0.4-1	01 MAY 2015
0.4-2	01 MAY 2015
0.4-3	01 MAY 2015

4.1-2	01 MAY 2015
4.1-3	01 MAY 2015
4.1-4	01 MAY 2015
4.1-6	01 MAY 2015
4.1-7	01 MAY 2015
4.1-8	01 MAY 2015
4.1-9	01 MAY 2015
4.1-10	01 MAY 2015
4.1-11	01 MAY 2015
4.1-12	01 MAY 2015
4.2-1	01 MAY 2015
4.2-2	01 MAY 2015

1.5-12	01 MAY 2015
--------	-------------

2.24.8-5	01 MAY 2015
2.24.8-6	01 MAY 2015

AIS HEADQUARTERS



GEN 0.4 CHECK LIST OF AIP PAGES

Page	Date	Page	Date	Page	Date
PART 1 – GENERAL (GEN)		2.3-4	01 NOV 2006	GEN 4	
GEN 0		2.3-5	01 NOV 2006	4.1-1	01 AUG 2012
0.1-1	01 NOV 2010	2.4-1	01 FEB 2015	*4.1-2	01 MAY 2015
0.1-2	01 NOV 2010	2.5-1	12 DEC 2013	*4.1-3	01 MAY 2015
0.1-3	01 NOV 2010	2.6-1	01 MAY 2007	*4.1-4	01 MAY 2015
0.2-1	01 FEB 2015	2.6-2	01 MAY 2007	4.1-5	01 MAY 2014
0.2-2	01 MAY 2014	2.7-1	01 NOV 2011	*4.1-6	01 MAY 2015
0.3-1	12 DEC 2013	2.7-2	01 NOV 2011	*4.1-7	01 MAY 2015
*0.4-1	01 MAY 2015	2.7-3	01 NOV 2011	*4.1-8	01 MAY 2015
*0.4-2	01 MAY 2015	2.7-4	01 NOV 2011	*4.1-9	01 MAY 2015
*0.4-3	01 MAY 2015	2.7-5	01 NOV 2011	*4.1-10	01 MAY 2015
0.5-1	01 NOV 2006	GEN 3		*4.1-11	01 MAY 2015
0.6-1	12 DEC 2013	3.1-1	01 FEB 2015	*4.1-12	01 MAY 2015
0.6-2	12 DEC 2013	3.1-2	01 MAY 2011	*4.2-1	01 MAY 2015
		3.1-3	01 MAY 2010	*4.2-2	01 MAY 2015
GEN 1		3.1-4	01 MAY 2010		
1.1-1	01 NOV 2010	3.1-5	01 FEB 2015		
1.2-1	01 MAY 2008	3.1-6	01 FEB 2015		
1.2-2	01 MAY 2008	3.1-7	01 FEB 2015		
1.2-3	01 MAY 2012	3.2-1	01 NOV 2010		
1.3.1	01 MAY 2011	3.2-2	01 NOV 2010		
1.3.2	01 FEB 2014	3.2-3	12 DEC 2013		
1.4.1	01 MAY 2011	3.3-1	01 NOV 2010		
1.5-1	01 MAY 2010	3.3-2	12 DEC 2013		
1.6-1	01 MAY 2011	3.3-3	01 AUG 2011		
1.7-1	01 NOV 2011	3.4-1	01 NOV 2010		
1.7-2	01 FEB 2011	3.4-2	01 NOV 2010		
1.7-3	01 NOV 2012	3.4-3	01 FEB 2010		
1.7-4	01 NOV 2010	3.4-4	01 FEB 2010		
1.7-5	01 NOV 2010	3.5-1	01 MAY 2009		
1.7-6	01 NOV 2010	3.5-2	01 AUG 2009		
GEN 2		3.5-3	01 FEB 2010		
2.1-1	01 NOV 2010	3.5-4	01 FEB 2010		
2.1-2	01 FEB 2014	3.5-5	01 NOV 2007		
2.1-3	01 FEB 2014	3.5-6	01 NOV 2006		
2.2-1	01 NOV 2010	3.5-7	01 NOV 2006		
2.2-2	01 NOV 2010	3.5-8	01 NOV 2006		
2.2-3	01 NOV 2010	3.5-9	01 NOV 2006		
2.2-4	01 NOV 2010	3.5-10	01 NOV 2006		
2.2-5	01 NOV 2010	3.5-11	01 NOV 2006		
2.2-6	01 NOV 2010	3.5-12	01 NOV 2006		
2.2-7	01 NOV 2010	3.5-13	01 NOV 2006		
2.2-8	01 NOV 2010	3.5-14	01 NOV 2006		
2.2-9	01 NOV 2010	3.5-15	01 NOV 2006		
2.2-10	01 NOV 2010	3.5-16	01 NOV 2006		
2.2-11	01 NOV 2010	3.5-17	01 NOV 2006		
2.2-12	01 NOV 2010	3.5-18	01 FEB 2010		
2.2-13	01 NOV 2010	3.5-19	01 FEB 2010		
2.2-14	01 NOV 2010	3.5-20	01 FEB 2010		
2.2-15	01 NOV 2010	3.5-21	01 FEB 2010		
2.2-16	01 NOV 2010	3.5-22	01 FEB 2010		
2.2-17	01 NOV 2010	3.6-1	01 AUG 2011		
2.2-18	01 NOV 2010	3.6-2	01 AUG 2011		
2.2-19	01 NOV 2010	3.6-3	01 AUG 2011		
2.2-20	01 NOV 2010				
2.3-1	01 NOV 2006				
2.3-2	01 NOV 2006				
2.3-3	01 NOV 2006				

GEN 0.4 CHECK LIST OF AIP PAGES

Page	Date	Page	Date	Page	Date
PART 2 – EN – ROUT (ENR)		1.10-6	01 FEB 2007	ENR 5	
ENR 0		1.11-1	01 FEB 2014	5.1-1	01 MAY 2012
0.6-1	01 FEB 2014	1.12-1	01 FEB 2007	5.1-2	01 MAY 2008
0.6-2	15 DEC 2011	1.12-2	01 FEB 2007	5.2-1	01 NOV 2009
		1.12-3	01 FEB 2007	5.3-1	01 NOV 2009
ENR 1		1.12-4	01 FEB 2007	5.4-1	01 MAY 2007
1.1-1	01 MAY 2008	1.13-1	01 FEB 2007	5.5-1	01 FEB 2014
1.1-2	01 MAY 2008	1.14-1	01 MAY 2008	5.6-1	01 MAY 2008
1.1-3	01 MAY 2008	1.14-2	01 MAY 2008	5.6-2	01 MAY 2008
1.2-1	12 DEC 2013	1.14-3	01 FEB 2007	5.6-3	01 MAY 2008
1.2-2	12 DEC 2013	1.14-4	01 FEB 2007	5.6-4	01 MAY 2008
1.2-3	12 DEC 2013	1.14-5	01 FEB 2007	5.6-5	01 MAY 2008
1.2-4	12 DEC 2013	1.14-6	01 FEB 2007		
1.2-5	12 DEC 2013	1.14-7	01 FEB 2007	ENR 6	
1.3-1	12 DEC 2013			6-1	12 DEC 2013
1.4-1	01 FEB 2015	ENR 2		6-3	01 MAY 2009
1.5-1	01 MAY 2014	2.1-1	12 DEC 2013	6-7	12 DEC 2013
1.5-2	30 APR 2015	2.1-2	12 DEC 2013	6-8	01 MAY 2008
1.5-3	12 DEC 2013	2.1-3	12 DEC 2013	6-9	01 MAY 2008
1.5-4	01 FEB 2014	2.1-4	12 DEC 2013		
1.5-5	12 DEC 2013	2.1-5	12 DEC 2013		
1.5-6	12 DEC 2013	2.2-1	12 DEC 2013		
1.5-7	30 APR 2015	2.2-2	12 DEC 2013		
1.5-8	30 APR 2015				
1.5-9	30 APR 2015	ENR 3			
1.5-10	30 APR 2015	3.1-1	12 DEC 2013		
1.5-11	12 DEC 2013	3.1-2	12 DEC 2013		
*1.5-12	01 MAY 2015	3.1-3	12 DEC 2013		
1.5-13	12 DEC 2013	3.1-4	12 DEC 2013		
1.5-14	12 DEC 2013	3.1-5	12 DEC 2013		
1.5-15	12 DEC 2013	3.1-6	12 DEC 2013		
1.5-16	12 DEC 2013	3.1-7	12 DEC 2013		
1.5-17	12 DEC 2013	3.2-1	12 DEC 2013		
1.5-18	12 DEC 2013	3.2-2	12 DEC 2013		
1.5-19	12 DEC 2013	3.2-3	12 DEC 2013		
1.5-20	12 DEC 2013	3.2-4	12 DEC 2013		
1.5-21	12 DEC 2013	3.2-5	12 DEC 2013		
1.5-22	12 DEC 2013	3.3-1	12 DEC 2013		
1.5-23	12 DEC 2013	3.3-2	12 DEC 2013		
1.5-24	12 DEC 2013	3.3-3	12 DEC 2013		
1.5-25	12 DEC 2013	3.3-4	12 DEC 2013		
1.6-1	12 DEC 2013	3.3-5	12 DEC 2013		
1.6-2	12 DEC 2013	3.3-6	12 DEC 2013		
1.6-3	12 DEC 2013	3.3-7	12 DEC 2013		
1.6-4	12 DEC 2013	3.3-8	12 DEC 2013		
1.6-5	12 DEC 2013	3.3-9	12 DEC 2013		
1.6-6	12 DEC 2013	3.3-10	12 DEC 2013		
1.6-7	12 DEC 2013	3.3-11	12 DEC 2013		
1.7-1	01 AUG 2011	3.4-1	01 FEB 2007		
1.7-2	01 NOV 2011	3.5-1	01 FEB 2007		
1.7-3	01 AUG 2011	3.6-1	01 FEB 2007		
1.8-1	01 AUG 2011				
1.8-2	01 AUG 2011	ENR 4			
1.9-1	01 AUG 2011	4.1-1	12 DEC 2013		
1.10-1	01 NOV 2010	4.2-1	01 MAY 2007		
1.10-2	01 MAY 2008	4.3-1	01 MAY 2007		
1.10-3	01 FEB 2007	4.4-1	01 FEB 2014		
1.10-4	01 FEB 2007	4.5-1	01 MAY 2007		
1.10-5	01 FEB 2007				

GEN 0.4 CHECK LIST OF AIP PAGES

Page	Date			Page	Date
PART 3 - AERODROMES (AD)		2.8	12 DEC 2013	2.24.8-12	12 DEC 2013
AD 0		2.9	07 FEB 2013	2.24.8-13	12 DEC 2013
0.6-1	12 DEC 2013	2.10	07 FEB 2013	2.24.8-15	12 DEC 2013
0.6-2	12 DEC 2013	2.11	07 FEB 2013	2.24.8-16	12 DEC 2013
AD 1		2.12	07 FEB 2013	AD 2 (OJAQ)	
1.1-1	01 MAY 2008	2.13	07 FEB 2013	2.1	12 DEC 2013
1.1-2	01 MAY 2008	2.14	07 FEB 2013	2.2	01 FEB 2011
1.1-3	01 AUG 2007	2.15	12 DEC 2013	2.3	01 FEB 2011
1.2-1	01 MAY 2008	2.16	12 DEC 2013	2.4	01 FEB 2011
1.2-2	01 MAY 2008	2.17	07 FEB 2013	2.5	01 FEB 2011
1.3-1	01 FEB 2010	2.18	07 FEB 2013	2.6	01 NOV 2012
1.4-1	01 AUG 2007	2.19	01 FEB 2014	2.7	01 NOV 2012
1.5-1	01 MAY 2013	2.20	01 FEB 2014	2.8	01 FEB 2011
AD 2 (OJAM)		2.24.1-1	12 DEC 2013	2.9	01 NOV 2011
2.1	12 DEC 2013	2.24.2-1	12 DEC 2013	2.10	12 DEC 2013
2.2	01 MAY 2009	2.24.2-2	12 DEC 2013	2.11	30 APR 2015
2.3	01 MAY 2009	2.24.2-3	12 DEC 2013	2.24.3-1	12 DEC 2013
2.4	01 MAY 2009	2.24.2-4	12 DEC 2013	2.24.4-1	12 DEC 2013
2.5	01 AUG 2007	2.24.2-5	12 DEC 2013	2.24.4-2	12 DEC 2013
2.6	01 AUG 2007	2.24.3-1	12 DEC 2013	2.24.6-1	12 DEC 2013
2.7	01 MAY 2008	2.24.4-1	12 DEC 2013	2.24.6-3	12 DEC 2013
2.8	01 MAY 2008	2.24.4-2	12 DEC 2013	2.24.6-5	12 DEC 2013
2.9	01 MAY 2014	2.24.4-3	12 DEC 2013	2.24.6-7	12 DEC 2013
2.10	01 MAY 2009	2.24.4-4	12 DEC 2013	2.24.6-9	12 DEC 2013
2.11	01 FEB 2014	2.24.5-1	12 DEC 2013	2.24.6-10	12 DEC 2013
2.24.1-1	12 DEC 2013	2.24.6-1	12 DEC 2013	2.24.7-1	12 DEC 2013
2.24.3-1	12 DEC 2013	2.24.6-3	12 DEC 2013	2.24.7-3	12 DEC 2013
2.24.4-1	12 DEC 2013	2.24.6-4	12 DEC 2013	2.24.7-5	12 DEC 2013
2.24.4-2	12 DEC 2013	2.24.6-5	12 DEC 2013	2.24.7-7	12 DEC 2013
2.24.6-1	12 DEC 2013	2.24.6-7	12 DEC 2013	2.24.8-1	12 DEC 2013
2.24.6-3	12 DEC 2013	2.24.6-8	12 DEC 2013	2.24.8-3	12 DEC 2013
2.24.6-4	12 DEC 2013	2.24.6-9	12 DEC 2013	2.24.8-4	12 DEC 2013
2.24.6-5	12 DEC 2013	2.24.6-11	12 DEC 2013	*2.24.8-5	01 MAY 2015
2.24.6-7	12 DEC 2013	2.24.6-12	12 DEC 2013	*2.24.8-6	01 MAY 2015
2.24.6-8	12 DEC 2013	2.24.6-13	12 DEC 2013	2.24.8-7	30 APR 2015
2.24.6-9	12 DEC 2013	2.24.6-15	12 DEC 2013	2.24.9-1	12 DEC 2013
2.24.6-10	12 DEC 2013	2.24.6-16	12 DEC 2013		
2.24.7-1	12 DEC 2013	2.24.6-17	12 DEC 2013		
2.24.7-3	12 DEC 2013	2.24.6-18	12 DEC 2013		
2.24.7-4	12 DEC 2013	2.24.6-19	12 DEC 2013		
2.24.7-5	12 DEC 2013	2.24.6-20	12 DEC 2013		
2.24.7-7	12 DEC 2013	2.24.7-1	12 DEC 2013		
2.24.7-8	12 DEC 2013	2.24.7-3	12 DEC 2013		
2.24.7-9	12 DEC 2013	2.24.7-4	12 DEC 2013		
2.24.7-10	12 DEC 2013	2.24.7-5	12 DEC 2013		
2.24.8-1	12 DEC 2013	2.24.7-7	12 DEC 2013		
2.24.8-3	12 DEC 2013	2.24.7-8	12 DEC 2013		
2.24.8-4	12 DEC 2013	2.24.7-9	12 DEC 2013		
2.24.8-5	12 DEC 2013	2.24.7-10	12 DEC 2013		
2.24.8-6	12 DEC 2013	2.24.8-1	01 FEB 2014		
2.24.8-7	12 DEC 2013	2.24.8-2	12 DEC 2013		
AD 2 (OJAI)		2.24.8-3	12 DEC 2013		
2.1	07 FEB 2013	2.24.8-4	12 DEC 2013		
2.2	07 FEB 2013	2.24.8-6	12 DEC 2013		
2.3	07 FEB 2013	2.24.8-7	12 DEC 2013		
2.4	07 FEB 2013	2.24.8-8	12 DEC 2013		
2.5	07 FEB 2013	2.24.8-9	12 DEC 2013		
2.6	12 DEC 2013	2.24.8-10	12 DEC 2013		
2.7	12 DEC 2013	2.24.8-11	12 DEC 2013		

GEN 4. CHARGES FOR AERODROMES AND AIR NAVIGATION SERVICES

GEN 4.1 AERODROMES CHARGES

1. GENERAL

1.1 Airport Charges, and air navigation facility charges, are chargeable fees in Jordanian Dinar.

2. QUEEN ALIA INTERNATIONAL AIRPORT

2.1 LANDING CHARGES

A. Landing charges shall be collected as per the maximum permissible Take-off weight for any aircraft according to the certificate of its air worthiness per each ton or part of a ton as follows:

Rates per ton (or part thereof)		
Description	JD	Fils
First 25 tons of Aircraft Weight	1	949
Following 75 tons	2	924
Exceeding 100 tons	3	314

The minimum landing charges are not less than 30 JD.

B. A surcharge of 35% of the charges prescribed in item (A) of this paragraph shall be collected for every landing of take off during night. Night is defined as the period between 30 minutes after sunset and 30 minutes before sunrise.

C. A surcharge of 10% of the charges prescribed in item (A) of this paragraph shall be collected against Air Traffic Control Services.

D. A charge of 50% of the landing charges prescribed in item (A) of this paragraph shall be collected on the following:

- Helicopter Aircraft engaged in commercial flights.
- Aircraft engaged in charter flights carrying tourists groups to the Kingdom.

E. A charge of 30% of the landing charges prescribed in (A) of this paragraph shall be collected on the following:

- Aircraft engaged in non-commercial flights.
- Foreign aircraft used for training or examining flight crew for the purpose of - acquiring licensed or ratings or testing of the aircraft and its equipment subject to the prior written approval of the Airport Director.
- Aircraft engaged in aerial activities for the service of the state.

2.2 PARKING CHARGES

2.2.1 PARKING CHARGES OUTSIDE HANGERS

A. Parking charges shall be collected according to the maximum permissible take off weight of any aircraft as indicated in the certificate of its Air Worthiness.

The first two hours of parking charges shall be exempted and this charge will be collected on every following hour as follows:

Rates per ton (or part thereof) per hour (or part thereof)		
Description	JD	Fils
First 25 tons of Aircraft Weight	-	195
Following 75 tons	-	143
Exceeding	-	078

Provided that in any case, the minimum parking charges are not less than 15 JD.

B. In any case of submitting a request for parking for a period exceeding 72 hours, parking fees shall be collected according to the maximum permissible take off weight of any aircraft as indicated in the certificate of air worthiness for a period of 24 hours or part thereof as follows:

Description	JD	Fils
1. For aircraft weight 5700 kg or less	32	491
2. For aircraft weight 5701 kg or more	64	981

→ C. Rebates specified in items (D,E) of paragraph (2.1) shall be applicable of the aircraft parking charges.

2.2.2 PARKING CHARGES INSIDE HANGERS

A. Parking charges inside the hangers shall be collected according to the maximum permissible takeoff weight of any aircraft as indicated in the certificate of its air worthiness as follows:

Hanger charges for the period of 24 hours (or part thereof) per ton (or part thereof)		
Description	JD	Fils
For the first 25 tons of Aircraft weight	3	314
For the following 75 tons	1	949
Exceeding 100 tons	-	975

Provided that in any case, the minimum collected parking charges inside the hangar be not less than 30 JD.

→ Rebates specified in items (D,E) of paragraph (2.1) shall be applied on the charges applicable on the parking charges inside the hangars.

2.3 AIR BRIDGES (JET WAYS) CHARGES

A charge for the use of Air Bridge for embarkation and disembarkation to and from Aircraft shall be collected on every two-hour period (or any part thereof) as follows:

Description	JD	Fils
1. For aircraft of 90 tons weight or more	77	978
2. For aircraft of less than 90 tons weight	51	985

- 2.4 The issuance of landing permit at Jordanian Civil Airports for non-scheduled flights per each landing is 20 JD
- 2.5 Aircraft arriving for maintenance shall be exempted from parking charges only provided that parking time does not exceed the period of 3 months.
- 2.6 The commissioners council is authorized to issue the appropriate instruction to implement these regulations after it is recommended by the Chief Commissioner of Civil Aviation Regulatory Commission provided that such instructions do not conflict or violate these regulations.

2.7 EXEMPTIONS

1. Aircraft belonging to the United Nations or its specialized agencies, International and Regional Organizations.
2. Aircraft engaged in non-revenue flights, search and rescue operations or other humanitarian services.
3. Aircraft of official guests of the state.
4. Aircraft owned by recognized aeronautical clubs, institutions on reciprocal basis.
5. Government aircraft engaged in public services.
6. State aircraft engaged in the training of citizens or testing navigational aids or flight tests on condition that they obtain written approval of Chief Commissioner of Civil Aviation Regulatory Commission and to whom he delegates authority 24 hours before departure.
7. Emergency landing after take-off due to technical or weather reasons or on instructions issued by Civil Aviation Regulatory Commission.
8. Civil Aviation staff (License Charges) as long as they are on duty.
9. Any other aircraft exempted by the Minister of Transport completely or partially according to certain circumstances recommended by the Chief Commissioner of Civil Aviation Regulatory Commission.

2.8 PASSENGERS SERVICE CHARGE

- 2.8.1 Transit Passenger charge JD 4.549
- 2.8.2 Terminal User Charge JD 5.993
- 2.8.3 Passengers departing on international flight from Queen Alia International Airport are charged Forty Jordanian Dinars (JD 40) as sales tax on the ticket for regular flights and cash for charter flights.
- 2.8.4 Common User Terminal Equipment Charge : JD 2

2.9 METHOED OF PAYMENT

A. Regular flights: shall be paid on monthly biases as follows:

1- Landing, parking, Air Bridge, passenger service charges shall be paid to:

Airport International Group

Tel: +962 (6) 445 3000 Ex. 230

Fax: +962 (6) 445 3464

P.O. Box 39052 Amman 11104

The Hashemite Kingdom of Jordan

2- Air Traffic Control Services, landing permit shall be paid by Bank Wire Transfer to:-

Civil Aviation Regulatory Commission

Central Bank of Jordan

Address of the bank

P.O. Box : (37) Amman-11118-Jordan

Tel: +962 6 4630301/10

Fax: +962 6 4638889

Telex: 21250 Bankazi Jo; 21476 Bakazi Jo; 21766 Bakazi Jo.

Swift code : CBJOJOAX

Account No : 19/3105/1

Account Name : Civil Aviation Regulatory Commission

IBAN code : JO21CBJO0010000000000131050019

B. Charter flight: shall be paid to the Airport International Group on cash biases.

NOTE: Payment and charges including bank transfer charges to be paid in Jordanian Dinar.

RMK: 1 Jordanian Dinar = 1000 Fils

3. AMMAN /MARKA INTERNATIONAL AIRPORT

3.1 LANDING CHARGES

A. Landing charges shall be collected as per the maximum permissible Take-off weight for any aircraft according to the certificate of its air worthiness per each ton or part of a ton as follows:

Rates per ton (or part thereof)		
Description	JD	Fils
First 25 tons of Aircraft Weight	1	500
Following 75 tons	2	250
Exceeding 100 tons	2	550

The minimum landing charges are not less than 30 JD.

B. A surcharge of 35% of the charges prescribed in item (A) of this paragraph shall be collected for every landing of take off during night. Night is defined as the period between 30 minutes after sunset and 30 minutes before sunrise.

C. A surcharge of 10% of the charges prescribed in item (A) of this paragraph shall be collected against Air Traffic Control Services.

D. A charge of 50% of the landing charges prescribed in item (A) of this paragraph shall be collected on the following:

- Aircraft engaged in domestic flights.
- Helicopter Aircraft engaged in commercial flights.
- Aircraft engaged in charter flights carrying tourists groups to the Kingdom.

E. A charge of 30% of the landing charges prescribed in (A) of this paragraph shall be collected on the following:

- Aircraft engaged in non-commercial flights.
- Foreign aircraft used for training or examining flight crew for the purpose of - acquiring licensed or ratings or testing of the aircraft and its equipment subject to the prior written approval of the Airport Director.
- Aircraft engaged in aerial activities for the service of the state.

3.2 PARKING CHARGES

3.2.1 PARKING CHARGES OUTSIDE HANGERS

A. Parking charges shall be collected according to the maximum permissible take off weight of any aircraft as indicated in the certificate of its Air Worthiness.

The first two hours of parking charges shall be exempted and this charge will be collected on every following hour as follows:

Rates per ton (or part thereof) per hour (or part thereof)		
Description	JD	Fils
First 25 tons of Aircraft Weight	-	150
Following 75 tons	-	105
Exceeding	-	060

Provided that in any case, the minimum parking charges are not less than 15 JD.

B. In any case of submitting a request for parking for a period exceeding 72 hours, parking fees shall be collected according to the maximum permissible take off weight of any aircraft as indicated in the certificate of air worthiness for a period of 24 hours or part thereof as follows:

Description	JD	Fils
1. For aircraft weight 5700 kg or less	25	000
2. For aircraft weight 5701 kg or more	50	000

→ C. Rebates specified in items (D,E) of paragraph (3.1) shall be applicable of the aircraft parking charges.

3.2.2 PARKING CHARGES INSIDE HANGERS

A. Parking charges inside the hangers shall be collected according to the maximum permissible take off weight of any aircraft as indicated in the certificate of its air worthiness as follows:

Hangar charges for the period of 24 hours (or part thereof) per ton (or part thereof)		
Description	JD	Fils
For the first 25 tons of Aircraft weight	2	550
For the following 75 tons	1	500
Exceeding 100 tons	-	750

Provided that in any case, the minimum collected parking charges inside the hangar be not less than 30 JD.

→ B. Rebates specified in items (D,E) of paragraph (3.1) shall be applied on the charges applicable on the parking charges inside the hangars.

3.3 AIR BRIDGES (JET WAYS) CHARGES

A. A charge for the use of Air Bridge for embarkation and disembarkation to and from Aircraft shall be collected on every two-hour period (or any part thereof) as follows:

Description	JD	Fils
1. For aircraft of 90 tons weight or more	60	000
2. For aircraft of less than 90 tons weight	40	000

B. the Chief Commissioner of Civil Aviation Regulatory Commission is authorized to extend the period for 30 minutes after the expiry of the 2 hours without any surcharge.

3.4. The issuance of landing permit at Jordanian Civil Airports for non-scheduled flights per each landing is 20 JD

3.5. Aircraft arriving for maintenance shall be exempted from parking charges only provided that parking time does not exceed the period of 3 months.

3.6. The commissioners council is authorized to issue the appropriate instruction to implement these regulations after it is recommended by the Chief Commissioner of Civil Aviation Regulatory Commission provided that such instructions do not conflict or violate these regulations.

3.7 EXEMPTIONS

1. Aircraft belonging to the United Nations or its specialized agencies, International and Regional Organizations.
2. Aircraft engaged in non-revenue flights, search and rescue operations or other humanitarian services.
3. Aircraft of official guests of the state.
4. Aircraft owned by recognized aeronautical clubs, institutions on reciprocal basis.
5. Government aircraft engaged in public services.
6. State aircraft engaged in the training of citizens or testing navigational aids or flight tests on condition that they obtain written approval of Chief Commissioner of Civil Aviation Regulatory Commission and to whom he delegates authority 24 hours before departure.
7. Emergency landing after take-off due to technical or weather reasons or on instructions issued by Civil Aviation Regulatory Commission.
8. Civil Aviation staff (License Charges) as long as they are on duty.
9. Any other aircraft exempted by the Minister of Transport completely or partially according to certain circumstances recommended by the Chief Commissioner of Civil Aviation Regulatory Commission.

3.8 PASSENGERS SERVICE CHARGE

3.8.1 Transit Passenger charge JD 3.500

3.8.2 Passengers departing on international flight from Amman/Marka International Airport are charged Forty Jordanian Dinars (JD 40) as sales tax on the ticket for regular flights and cash for charter flights.

→ 3.8.3 Common User Terminal Equipment Charge: JD 2

3.9 METHOED OF PAYMENT:

- A. Regular flights: Charges shall be paid on monthly basis.
- B. Charter flight: shall be paid on cash basis.
- C. All charges at Amman International Airport/Marka shall be paid to:

→ **Jordan Airports Company (JAC)**
Tel: +962 (6) 4892282 Ex.3556
Fax: +962 (6) 4883279
P.O. Box 15052 Amman 11134
The Hashemite Kingdom of Jordan

NOTE: Payment and charges including bank transfer charges to be paid in Jordanian Dinar.

RMK: 1 Jordanian Dinar = 1000 Fils

4. AQABA/ KING HUSSEIN INTERNATIONAL AIRPORT**4.1 LANDING CHARGES**

A. Landing charges shall be collected as per the maximum permissible Take-off weight for any aircraft according to the certificate of its air worthiness per each ton or part of a ton as follows:

Rates per ton (or part thereof)		
Description	JD	Fils
First 25 tons of Aircraft Weight	1	500
Following 75 tons	2	250
Exceeding 100 tons	2	550

The minimum landing charges are not less than 30 JD.

B. A surcharge of 35% of the charges prescribed in item (A) of this paragraph shall be collected for every landing of take off during night. Night is defined as the period between 30 minutes after sunset and 30 minutes before sunrise.

C. A surcharge of 10% of the charges prescribed in item (A) of this paragraph shall be collected against Air Traffic Control Services.

D. A charge of 50% of the landing charges prescribed in item (A) of this paragraph shall be collected on the following:

- Aircraft engaged in domestic flights.
- Helicopter Aircraft engaged in commercial flights.
- Aircraft engaged in charter flights carrying tourists groups to the Kingdom.

E. A charge of 30% of the landing charges prescribed in (A) of this paragraph shall be collected on the following:

- Aircraft engaged in non-commercial flights.
- Foreign aircraft used for training or examining flight crew for the purpose of - acquiring licensed or ratings or testing of the aircraft and its equipment subject to the prior written approval of the Airport Director.
- Aircraft engaged in aerial activities for the service of the state.

4.2 PARKING CHARGES**4.2.1 PARKING CHARGES OUTSIDE HANGERS**

A. Parking charges shall be collected according to the maximum permissible take off weight of any aircraft as indicated in the certificate of its Air Worthiness.

The first two hours of parking charges shall be exempted and this charge will be collected on every following hour as follows:

Rates per ton (or part thereof) per hour (or part thereof)		
Description	JD	Fils
First 25 tons of Aircraft Weight	-	150
Following 75 tons	-	105
Exceeding	-	060

Provided that in any case, the minimum parking charges are not less than 15 JD

B. In any case of submitting a request for parking for a period exceeding 72 hours, parking fees shall be collected according to the maximum permissible take off weight of any aircraft as indicated in the certificate of air worthiness for a period of 24 hours or part thereof as follows:

Description	JD	Fils
1. For aircraft weight 5700 kg or less	25	000
2. For aircraft weight 5701 kg or more	50	000

→ C. Rebates specified in items (D, E) of paragraph (4.1) shall be applicable of the aircraft parking charges.

4.2.2 PARKING CHARGES INSIDE HANGERS

A. Parking charges inside the hangers shall be collected according to the maximum permissible take off weight of any aircraft as indicated in the certificate of its air worthiness as follows:

Hanger charges for the period of 24 hours (or part thereof) per ton (or part thereof)		
Description	JD	Fils
For the first 25 tons of Aircraft weight	2	550
For the following 75 tons	1	500
Exceeding 100 tons	-	750

Provided that in any case, the minimum collected parking charges inside the hangar be not less than 30 JD.

→ B. Rebates specified in items (D, E) of paragraph (4.1) shall be applied on the charges applicable on the parking charges inside the hangars.

4.3 AIR BRIDGES (JET WAYS) CHARGES

A. A charge for the use of Air Bridge for embarkation and disembarkation to and from Aircraft shall be collected on every two-hour period (or any part thereof) as follows:

Description	JD	Fils
1. For aircraft of 90 tons weight or more	60	000
2. For aircraft of less than 90 tons weight	40	000

C. The Chief Commissioner of Civil Aviation Regulatory Commission is authorized to extend the period for 30 minutes after the expiry of the 2 hours without any surcharge.

NOTE: Except otherwise stipulated in special agreements between the Government and other parties, 50% of the original charges realized according to the provisions of paragraph (1,2,3) excluding what is stipulated in item (D, E) of paragraph (4.1) shall be collected for aircraft operating to AQABA/King Hussein international airport.

4.4. The issuance of landing permit at Jordanian Civil Airports for non-scheduled flights per each landing is 20 JD

4.5. Aircraft arriving for maintenance shall be exempted from parking charges only provided that parking time does not exceed the period of 3 months.

4.6. The commissioners council is authorized to issue the appropriate instruction to implement these regulations after it is recommended by the Chief Commissioner of Civil Aviation Regulatory Commission provided that such instructions do not conflict or violate these regulations.

4.7 EXEMPTIONS

1. Aircraft belonging to the United Nations or its specialized agencies, International and Regional Organizations.
2. Aircraft engaged in non-revenue flights, search and rescue operations or other humanitarian services.
3. Aircraft of official guests of the state.
4. Aircraft owned by recognized aeronautical clubs, institutions on reciprocal basis.
5. Government aircraft engaged in public services.
6. State aircraft engaged in the training of citizens or testing navigational aids or flight tests on condition that they obtain written approval of Chief Commissioner of Civil Aviation Regulatory Commission and to whom he delegates authority 24 hours before departure.
7. Emergency landing after take-off due to technical or weather reasons or on instructions issued by Civil Aviation Regulatory Commission.
8. Civil Aviation staff (License Charges) as long as they are on duty.
9. Any other aircraft exempted by the Minister of Transport completely or partially according to certain circumstances recommended by the Chief Commissioner of Civil Aviation Regulatory Commission.

4.8 PASSENGERS SERVICE CHARGE

4.8.1 Transit Passenger charge JD 3.500

4.8.2 Passengers departing on international flight from Aqaba/King Hussein International Airport are charged Forty Jordanian Dinars (JD 40) as sales tax on the ticket for regular flights and cash for charter flights.

4.8.3 Low Cost Carrier and Charter flights will be exempted from the Forty Jordanian Dinars as special Tax.

4.8.4 Common User Terminal Equipment Charge: JD 2

4.9 METHOD OF PAYMENT:

A. Regular flights: Charges shall be paid on monthly basis.

B. Charter flight: shall be paid on cash basis.

C. All charges at King Hussein International Airport/ Aqaba shall be paid to:

Aqaba Airports Company
Tel: +962 (3) 2034010
Fax: +962 (3) 2034011
P.O. Box 2662 Aqaba 77110
The Hashemite Kingdom of Jordan

NOTE: Payment and charges including bank transfer charges to be paid in Jordanian Dinar.

RMK: 1 Jordanian Dinar = 1000 Fils

GEN 4.2 AIR NAVIGATION SERVICES CHARGES

4.2.1 OVER FLYING CHARGES

Air Navigation Services charges of aircraft over flying Jordanian airspace shall be collected according to maximum permissible take-off weight as indicated in the certificate of Air worthiness for each ton (or part thereof) charge 1 JD per ton.

Provided that in any case, the minimum over flying collected charges be not less than 40 JD.

Note: If registration marks of the over flying aircraft are not included in the flight plans, the Civil Aviation Regulatory Commission reserves the right to charge according to the maximum take-off weight of the aircraft.

4.2.2 OVERFLYING PERMITS CHARGES

Issuing permits for over flying Jordanian for non-scheduled flights against each crossing 10 JD.

4.2.3 EXEMPTIONS

1. Aircraft belonging to the United Nations or its specialized agencies, International and Regional Organizations.
2. Aircraft engaged in non-revenue flights, search and rescue operations or other humanitarian services.
3. Aircraft of official guests of the state.
4. Aircraft owned by recognized aeronautical clubs, institutions on reciprocal basis.
5. Government aircraft engaged in public services.
6. State aircraft engaged in the training of citizens or testing navigational aids or flight tests on condition that they obtain written approval of Chief Commissioner of Civil Aviation Regulatory Commission and to whom he delegates authority 24 hours before departure.
7. Emergency landing after take-off due to technical or weather reasons or on instructions issued by Civil Aviation Regulatory Commission.
8. Civil Aviation staff (License Charges) as long as they are on duty.
9. Any other aircraft exempted by the Minister of Transport completely or partially according to certain circumstances recommended by the Chief Commissioner of Civil Aviation Regulatory Commission.

4.2.4 AUTHORIZATION

The commissioners council is authorized to issue the appropriate instruction to implement these regulations after it is recommended by the Chief Commissioner of Civil Aviation Regulatory Commission provided that such instructions do not conflict or violate these regulations.

4.2.5 METHOD OF PAYMENT

All Charges due this part shall be paid to Civil Aviation Regulatory Commission on monthly basis to the following address:-

Civil Aviation Regulatory Commission

Central Bank of Jordan

Address of the bank

P.O. Box : (37) Amman-11118-Jordan

Tel: +962 6 4630301/10

Fax: +962 6 4638889

Telex: 21250 Bankazi Jo; 21476 Bakazi Jo; 21766 Bakazi Jo.

Swift code : CBJOJOAX

Account No : 19/3105/1

Account Name : Civil Aviation Regulatory Commission

IBAN code : JO21CBJO0010000000000131050019

NOTE: Payment and charges including Bank transfer charges to be paid in Jordanian Dinar.

RMK: 1 Jordanian Dinar = 1000 Fils

2. ARRIVING FLIGHTS

2.1 GENERAL

Arrival control is provided by Amman Approach Control within the Terminal Control Area from FL250- 6000FT.

2.2 Arriving Flights

Aircraft inbound to Amman/Queen Alia International will follow Standard Arrival Routes (STARS). Strict adherence to these routes is essential as procedural separation between inbound and outbound aircraft is based on these criteria.

2.3 Radio Failure

2.3.1 Westerly Operations

In case of communication failure, the designated navigation aid to be used for holding is QAA/VOR. After arrival over the QAA commence descent at or as close as possible to the EAT last received and acknowledged or as close as possible to the ETA given by the current Flight Plan if no EAT has been received.

2.3.1.1 Amman/Queen Alia

Amman/Queen Alia Arrivals will complete the normal Instrument Approach Procedure published for the QAA/VOR and land if possible within 30 minutes of the last acknowledged EAT or ETA whichever is later.

2.3.1.2 Amman/Marka

Amman/Marka arrivals will descend in the QAA holding pattern. When leveling 6000FT set course for AMN/VOR on AMN R160 to commence the normal instrument approach procedure published for the AMN/VOR and land if possible within 30 minutes of the last acknowledged EAT or ETA whichever is later.

2.3.2 Easterly Operations A412 and L513

In case of communication failure, the designated navigation aids to be used for holding is the AMN/VOR for inbound via LUDAN LOSAR, and RALNA. After arrival over the AMN commence descent at or as close as possible to the ETA given by the current Flight Plan if no EAT has been received.

2.3.2.1 Amman/Marka

Amman/Marka arrivals will complete the normal instrument approach procedure published for the AMN/VOR and land if possible within 30 minutes of the last acknowledged EAT or ETA whichever is later.

2.3.2.2 Amman/Queen Alia

Amman/Queen Alia Arrivals will continue in accordance with LUDAN3A LOSAR3A, and RALNA3A profile then down to 6000FT to carry out MDB NDB instrument approach procedure and land if possible within 30 minutes of the last acknowledged EAT or ETA whichever is later.

→ **2.3.3 Easterly Operations R652, UM449, and N318**

In case of communication failure, the designated navigation aid to be used for holding is the QTR/VOR for inbound via QTR EGLOT, KINUR and KULDI. After arrival over QTR commence descent to ALT 11000 FT at or as close as possible to the EAT last received and acknowledged or as close as possible to the ETA given by the current Flight Plan. If no EAT has been received when leveling ALT 11000 FT proceeds as follows: -

2.3.3.1 Amman/Marka

Amman/Marka arrivals will continue in accordance with the QTR5A, KINUR5A and KULDI5A profile and carry out the procedure published for the AMN/VOR and land if possible within 30 minutes of the last acknowledged EAT or ETA whichever is later.

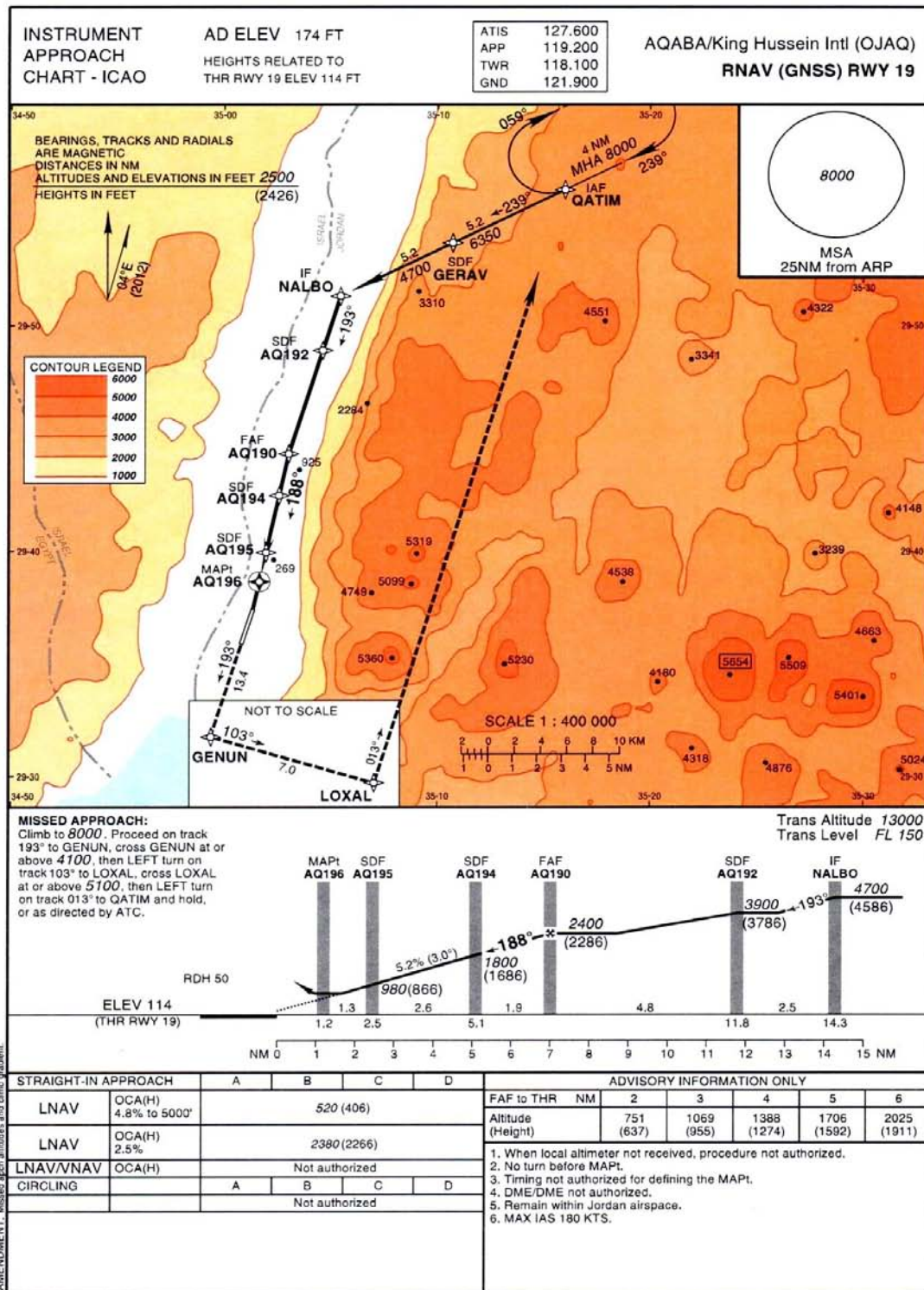
2.3.3.2 Amman/Queen Alia

Amman/Queen Alia Arrivals will continue in accordance with the QTR3A, KINUR3A and KULDI3A profile to carry out the MDB NDB Instrument Approach Procedure and land if possible within 30 minutes of the last acknowledged EAT or ETA whichever is later.

2.4 Take off weather minimums for IFR flights using Amman/Queen Alia , Amman/Marka and Aqaba/ King Hussein International Aerodromes are as follows:

AIRCRAFT CAT A AND B RVR 400M / VIS 1500M.

AIRCRAFT CAT C AND D RVR 400M / VIS 800M.



Holding Instruction/Areas RNAV (GNSS) RWY 19

Path Descriptor	Fix Identifier	Inbound course °M	Leg Distance	Turn Direction	Minimum Altitude	Maximum Altitude	Speed	Magnetic Variation	Navigation Specification
Hold	QATIM	239.02	4.0 NM	R	8000	-	180 kts	4.0°E	

Route Description: RNAV (GNSS) RWY 19

Path Terminator	Waypoint Identifier	Flyover	Course/Track °M	Magnetic Variation	Distance (NM)	Turn Direction	Altitude (FT)	Speed	VPA/TCH	Navigation Specification
IF	QATIM	N		4.0°E			+8000	180 kts		RNP APCH
TF	GERAV	N	238.98°	4.0°E	5.2		+6350	180 kts		RNP APCH
TF	NALBO	N	239.02°	4.0°E	5.2		+4700	180 kts		RNP APCH
TF	AQ192	N	192.81°	4.0°E	2.5	left	+3900	180 kts		RNP APCH
TF	AQ190	N	192.80°	4.0°E	4.8		+2400	180 kts		RNP APCH
TF	AQ194	N	187.99°	4.0°E	1.9		+1800	180 kts		RNP APCH
TF	AQ195	N	188.00°	4.0°E	2.6		+980	180 kts		RNP APCH
TF	AQ196	Y	187.98°	4.0°E	1.3		@164	180 kts	-3.0 / 50'	RNP APCH
TF	GENUN	N	192.56°	4.0°E	13.4		+4100	180 kts		RNP APCH
CF	LOXAL	N	103.01°	4.0°E	7.0	left	+5100	180 kts		RNP APCH
DF	QATIM	Y		4.0°E		left	+8000	180 kts		RNP APCH

Aeronautical Data Tabulation: RNAV (GNSS) RWY 19

Waypoint / Fix	Latitude	Longitude	Latitude (MIN)	Longitude (MIN)	Notes
QATIM (IAF)	N29°56'00.00"	E035°16'00.00"	N29°56.000'	E035°16.000'	
GERAV (SDF)	N29°53'39.06"	E035°10'43.07"	N29°53.651'	E035°10.718'	
NALBO (IF)	N29°51'18.29"	E035°05'26.05"	N29°51.305'	E035°05.434'	
AQ192 (SDF)	N29°48'54.39"	E035°04'36.20"	N29°48.907'	E035°04.603'	
AQ190 (FAF)	N29°44'19.40"	E035°03'01.06"	N29°44.323'	E035°03.018'	
AQ194 (SDF)	N29°42'28.51"	E035°02'34.07"	N29°42.475'	E035°02.568'	
AQ195 (SDF)	N29°39'57.01"	E035°01'57.20"	N29°39.950'	E035°01.953'	
AQ196 (MAPt)	N29°38'39.30"	E035°01'38.32"	N29°38.655'	E035°01.639'	
GENUN (MAF)	N29°25'44.63"	E034°57'15.28"	N29°25.744'	E034°57.255'	
LOXAL (MAF)	N29°23'41.23"	E035°04'55.06"	N29°23.687'	E035°04.918'	
QATIM (MAHF)	N29°56'00.00"	E035°16'00.00"	N29°56.000'	E035°16.000'	