

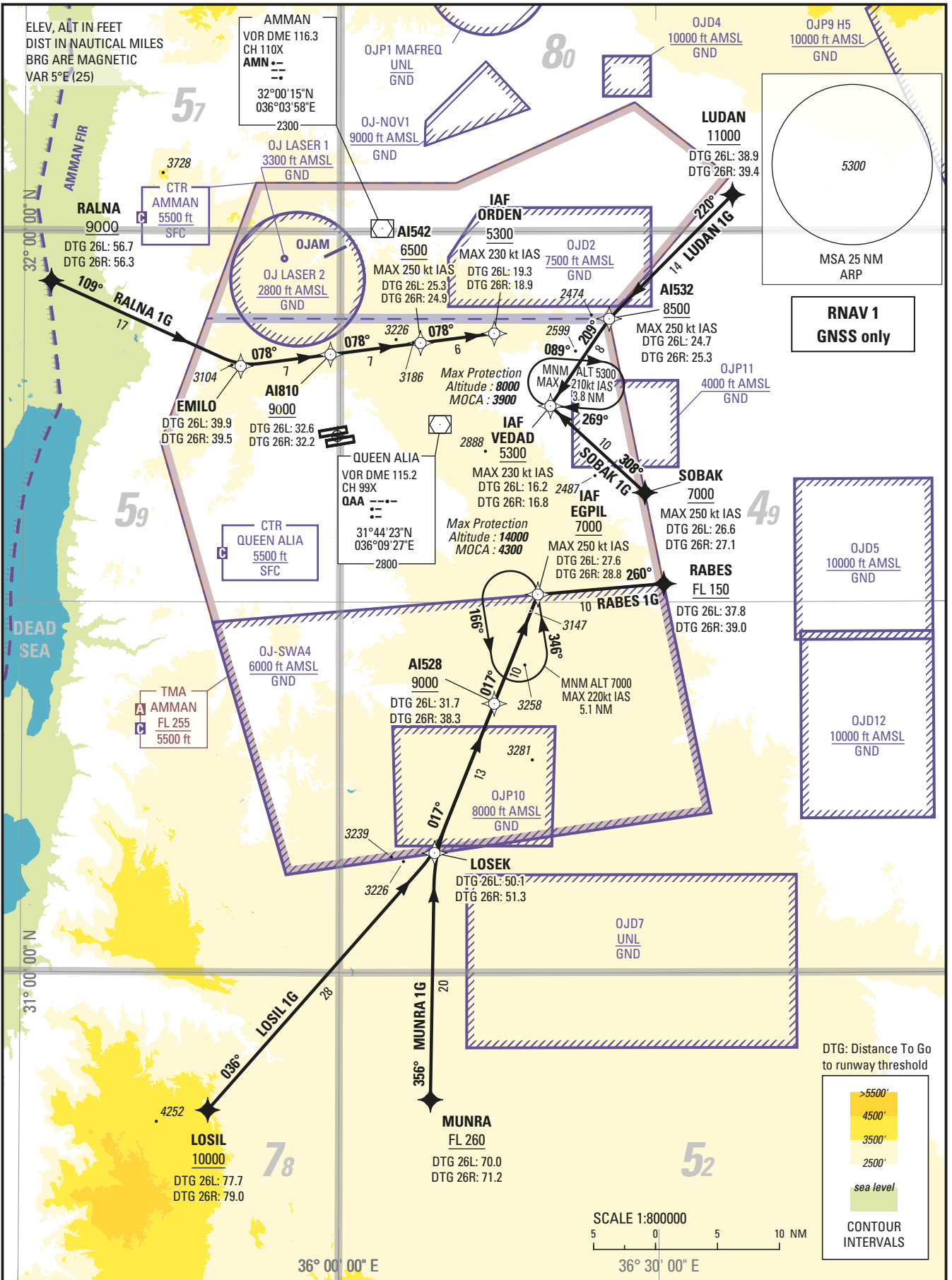
STANDARD ARRIVAL CHART —  
INSTRUMENT (STAR) — ICAO

TRANSITION LEVEL  
FL 150  
  
TRANSITION ALTITUDE  
13000 ft

ATIS 127.6  
APP 128.9  
TWR 119.8

AMMAN/Queen Alia Intl. (OJAI)  
RNAV RWY 26 L/R

SOBAK 1G RABES 1G LOSIL 1G  
LUDAN 1G MUNRA 1G RALNA 1G



change: correction of typo in the distance unit  
of measurement on VEDAD holding



**ARRIVAL TEXTS for RNAV STAR RWY26 L/R**

**RALNA 1G**

From RALNA at or above 9000 FT to EMILO to AI810 at or above 9000 FT to AI542 at or above 6500 FT and maximum 250 KIAS to ORDEN (IAF) at or above 5300 FT and maximum 230 KIAS.

**LUDAN 1G**

From LUDAN at or above 11000 FT to AI532 at or above 8500 FT and maximum 250 KIAS to VEDAD (IAF) at or above 5300 FT and maximum 230 KIAS.

**SOBAK1G**

From SOBAK at or above 7000 FT and maximum 250 KIAS to VEDAD (IAF) at or above 5300 FT and maximum 230 KIAS.

**LOSIL 1G**

From LOSIL at or above 10000 FT to LOSEK to AI528 at or above 9000 FT to EGPIL (IAF) at or above 7000 FT and maximum 250 KIAS.

**MUNRA 1G**

From MUNRA at or above FL 260 to LOSEK to AI528 at or above 9000 FT to EGPIL (IAF) at or above 7000 FT and maximum 250 KIAS.

**RABES 1G**

From RABES at or above FL 150 to EGPIL (IAF) at or above 7000 FT and maximum 250 KIAS.

**Holding instruction**

Path Descriptor	Waypoint Identifier	Inbound Course °M (°T)	Leg Distance	Turn direction	Minimum Altitude (ft/FL)	Maximum Altitude (ft/FL)	Speed Limit (kt)	Magnetic Variation	Navigation Specification
Hold	EGPIL	346 (351.0)	-	L	7000	14000	220	+5.0	RNAV 1
Hold	VEDAD	269 (274.0)	-	R	5300	8000	210	+5.0	RNAV 1

**Route Description: RNAV STAR RWY26 L/R**

<b>RALNA 1G</b>											
Serial Number	Path Descriptor	Waypoint Identifier	Fly - Over	Course °M (°T)	Magnetic Variation	Distance (NM)	Turn direction	Altitude (ft/FL)	MAX IAS (kt)	VPA/TCH (°/ft)	Navigation Accuracy (NM)
10	IF	RALNA	-	-	-	-	-	+9000	-	-	RNAV 1
20	TF	EMILO	-	109 (114.0)	+5.0	16.8	-	-	-	-	RNAV 1
30	TF	AI810	-	078 (082.5)	+5.0	7.3	-	+9000	-	-	RNAV 1
40	TF	AI542	-	078 (082.6)	+5.0	7.3	-	+6500	-250	-	RNAV 1
50	TF	ORDEN	-	078 (082.7)	+5.0	6.0	-	+5300	-230	-	RNAV 1
<b>LUDAN 1G</b>											
Serial Number	Path Descriptor	Waypoint Identifier	Fly - Over	Course °M (°T)	Magnetic Variation	Distance (NM)	Turn direction	Altitude (ft/FL)	MAX IAS (kt)	VPA/TCH (°/ft)	Navigation Accuracy (NM)
10	IF	LUDAN	-	-	-	-	-	+11000	-	-	RNAV 1
20	TF	AI532	-	220 (225.0)	+5.0	14.1	-	+8500	-250	-	RNAV 1
30	TF	VEDAD	-	209 (214.1)	+5.0	8.5	-	+5300	-230	-	RNAV 1
<b>SOBAK 1G</b>											
Serial Number	Path Descriptor	Waypoint Identifier	Fly - Over	Course °M (°T)	Magnetic Variation	Distance (NM)	Turn direction	Altitude (ft/FL)	MAX IAS (kt)	VPA/TCH (°/ft)	Navigation Accuracy (NM)
10	IF	SOBAK	-	-	-	-	-	+7000	-250	-	RNAV 1
20	TF	VEDAD	-	308 (312.6)	+5.0	10.3	-	+5300	-230	-	RNAV 1
<b>RABES 1G</b>											
Serial Number	Path Descriptor	Waypoint Identifier	Fly - Over	Course °M (°T)	Magnetic Variation	Distance (NM)	Turn direction	Altitude (ft/FL)	MAX IAS (kt)	VPA/TCH (°/ft)	Navigation Accuracy (NM)
10	IF	RABES	-	-	-	-	-	+FL150	-	-	RNAV 1
20	TF	EGPIL	-	260 (265.3)	+5.0	10.2	-	+7000	-250	-	RNAV 1

MUNRA 1G											
Serial Number	Path Descriptor	Waypoint Identifier	Fly - Over	Course °M (°T)	Magnetic Variation	Distance (NM)	Turn direction	Altitude (ft/FL)	MAX IAS (kt)	VPA/TCH (°/ft)	Navigation Accuracy (NM)
10	IF	MUNRA	-	-	-	-	-	+FL260	-	-	RNAV 1
20	TF	LOSEK	-	356 (000.9)	+5.0	19.9	-	-	-	-	RNAV 1
30	TF	AI528	-	017 (021.7)	+5.0	13.0	-	+9000	-	-	RNAV 1
40	TF	EGPIL	-	017 (021.8)	+5.0	9.5	-	+7000	-250	-	RNAV 1
LOSIL 1G											
Serial Number	Path Descriptor	Waypoint Identifier	Fly - Over	Course °M (°T)	Magnetic Variation	Distance (NM)	Turn direction	Altitude (ft/FL)	MAX IAS (kt)	VPA/TCH (°/ft)	Navigation Accuracy (NM)
10	IF	LOSIL	-	-	-	-	-	+10000	-	-	RNAV 1
20	TF	LOSEK	-	036 (041.2)	+5.0	27.7	-	-	-	-	RNAV 1
30	TF	AI528	-	017 (021.7)	+5.0	13.0	-	+9000	-	-	RNAV 1
40	TF	EGPIL	-	017 (021.8)	+5.0	9.5	-	+7000	-250	-	RNAV 1

**Aeronautical Data Tabulation: RNAV STAR RWY26 L/R**

WAYPOINT LIST		
Waypoint / Fix	Latitude	Longitude
SOBAK	31°38'51.600"N	036°28'49.710"E
VEDAD	31°45'52.847"N	036°19'54.051"E
RABES	31°31'29.090"N	036°30'35.113"E
EGPIL	31°30'37.923"N	036°18'41.447"E
LOSIL	30°48'51.200"N	035°47'41.310"E
LOSEK	31°09'42.220"N	036°08'56.800"E
AI528	31°21'47.554"N	036°14'33.939"E
LUDAN	32°02'56.600"N	036°37'13.290"E
AI532	31°52'56.003"N	036°25'28.999"E
MUNRA	30°49'44.290"N	036°08'34.880"E
RALNA	31°55'57.000"N	035°32'33.000"E
EMILO	31°49'05.530"N	035°50'32.710"E
AI810	31°50'02.605"N	035°59'03.199"E
AI542	31°50'59.270"N	036°07'35.516"E
ORDEN	31°51'45.200"N	036°14'34.763"E